

Catalog Number: rb2AF568

15 Publications

Basic Information

Catalog Number:
rb2AF568

Applications:
IF, IHC, ICC

Host:
Alpaca

Conjugate:
Alexa Fluor® 568

Type:
Nanobody

Class:
Recombinant

RRID:
AB_2827576

Description

anti-RFP VHH/ Nanobody conjugated to fluorophore for IF, of mCherry and other red fluorescent protein-fusion proteins

Specificity/Target

mCherry, mPlum, mRFP, mRFPruby, mKate2
For the complete list, please click here: [Fluorescent protein specificity table Nano-Booster](#)

Physical State

Liquid

Suggested Dilution

IF/ICC/IHC: 1:500- 1:1,000

DOL

2 fluorophores per Nanobody

Affinity (K_D)

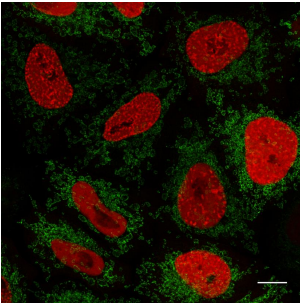
Dissociation constant K_D of 5nM

Storage

Storage:
Shipped at ambient temperature. Store at -20°C/-4°F. Stable for 6 month. Protect from light.

Storage Buffer:
10 mM HEPES pH 7.0, 500 mM NaCl, 5 mM EDTA
Preservative: 0.09% Sodium azide

Selected Validation Data



HeLa cells transiently transfected with PCNA-mRFP and Tom70-eGFP were subjected to one-step immunostaining with RFP-Booster Alexa Fluor 568 (red) and GFP-Booster Alexa Fluor 488 (green). Scale bar, 10 μ m. Images were recorded at the Core Facility Bioimaging at the Biomedical Center, LMU Munich.