

For Research Use Only

# Anti-Mouse CD8a Rat scFv Antibody

Catalog Number:SF65666-1-TR



## Basic Information

Catalog Number:

SF65666-1-TR

Source:

Rat

Type:

scFv

GenBank Accession Number:

BC030679

GeneID (NCBI):

12525

Full Name:

CD8 antigen, alpha chain

Purification Method:

Affinity purification

CloneNo.:

53-6.7

Recommended Dilutions:

FC: 0.25 ug per 10<sup>6</sup> cells in a 100 µl suspension

## Applications

Tested Applications:

FC

Species Specificity:

mouse

Positive Controls:

FC : mouse splenocytes,

## Background Information

CD8 is a transmembrane glycoprotein composed of two disulfide-linked chains. It can be present as a homodimer of CD8 $\alpha$  or as a heterodimer of CD8 $\alpha$  and CD8 $\beta$  (PMID: 3264320; 8253791). CD8 is found on most thymocytes. The majority of class I-restricted T cells express mostly the CD8 $\alpha\beta$  heterodimer while CD8 $\alpha\alpha$  homodimers alone have been found on some gut intraepithelial T cells, on some T cell receptor (TCR)  $\gamma\delta$  T cells and on NK cells (PMID: 2111591; 1831127; 8420975). CD8 acts as a co-receptor that binds to MHC class I and participates in cytotoxic T cell activation (PMID: 8499079). During T cell development, CD8 is required for positive selection of CD4<sup>-</sup>/CD8<sup>+</sup> T cells (PMID: 1968084).

## Storage

Storage:

Store at 2-8°C. Stable for one year after shipment.

Storage Buffer:

50mM HEPES, 150mM NaCl, 5mM EDTA, 0.1% CHAPS, 10% Sucrose and 0.1% Proclin300, pH7.3

For technical support and original validation data for this product please contact:

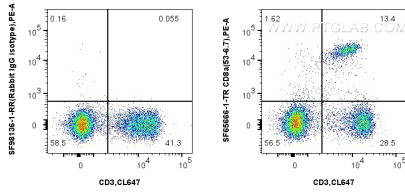
T: 4006900926

E: [Proteintech-CN@ptglab.com](mailto:Proteintech-CN@ptglab.com)

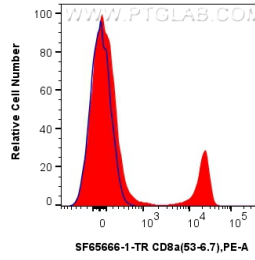
W: [ptgcn.com](http://ptgcn.com)

This product is exclusively available under Proteintech Group brand and is not available to purchase from any other manufacturer.

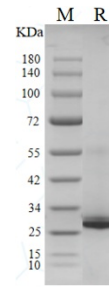
## Selected Validation Data



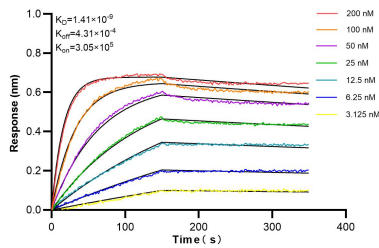
1x10<sup>6</sup> mouse splenocytes were surface stained with 0.25 ug Anti-Mouse CD8a Rat scFv Antibody (SF65666-1-TR, Clone: 53-6.7) or 0.25 ug Rabbit scFv Isotype Control (SF98136-1-RR, Clone: 240953C9), and PE Anti-6<sup>th</sup>His, His-Tag Rabbit RecAb (PE-FcA98450, Clone: 251107A1). Cells were then stained with CoraLite® Plus 647 Anti-Mouse CD3 (17A2) (CL647-65077, Clone: 17A2). Cells were not fixed.



1x10<sup>6</sup> mouse splenocytes were surface stained with 0.25 ug Anti-Mouse CD8a Rat scFv Antibody (SF65666-1-TR, Clone: 53-6.7) (red) or 0.25 ug Rabbit scFv Isotype Control (SF98136-1-RR, Clone: 240953C9) (blue), and PE Anti-6<sup>th</sup>His, His-Tag Rabbit RecAb (PE-FcA98450, Clone: 251107A1). Cells were not fixed.



Purity of Recombinant ScFv antibody (Cat No.:SF65666-1-TR) was determined by SDS-PAGE. The protein was resolved in an SDS-PAGE in reducing (R) and condition and stained using Coomassie blue.



Biolayer interferometry (BLI) kinetic assays of SF65666-1-TR against Mouse CD8a were performed. The affinity constant is 1.41 nM.