

For Research Use Only.
Not For Use In Diagnostics.

CoraLite647-conjugated Mouse Anti-Heavy Chain of Rabbit IgG

Catalog Number:SA00014-6



Information

Catalog Number:

SA00014-6

Host:

Mouse

Applications:

IF, FC

Reactivity:

Rabbit

Physical State:

Liquid

Conjugation:

CoraLite®647

Recommended Dilutions

1:100-1:500

Preservative

Proclin300

Fluorophore

CL647 Fluorescent Dye. Amax=642nm, Emax=662nm

Stabilizer

0.5% BSA

Storage

Storage:

Store at -20°C. Stable for one year after shipment.

Storage Buffer:

PBS with 50% Glycerol, 0.05% Proclin300, 0.5% BSA, pH 7.3.

Aliquoting is unnecessary for -20°C storage

Purity

Protein G purification

For technical support and original validation data for this product please
contact:

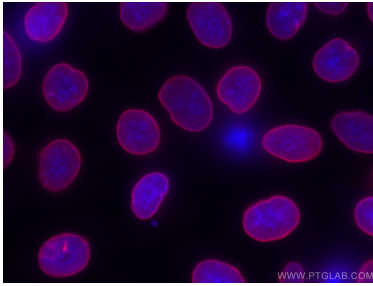
T: 4006900926

E: Proteintech-CN@ptglab.com

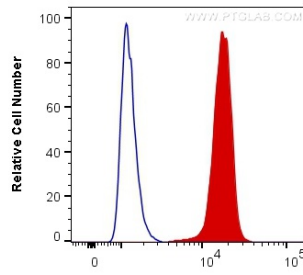
W: ptgcn.com

This product is exclusively available under Proteintech
Group brand and is not available to purchase from any
other manufacturer.

Selected Validation Data



Immunofluorescent analysis of (-20°C Ethanol) fixed HeLa cells using 12987-1-AP (Lamin B antibody) and the CoraLite®647-Mouse Anti-Heavy chain of Rabbit IgG antibody (SA00014-6), at dilution of 1:200.



1X10⁶ HepG2 cells were intracellularly stained with Anti-human TDP-43 recombinant antibody (80002-1-RR) and 0.2 ug CoraLite®647 Mouse Anti-Rabbit Heavy chain of Rabbit IgG (SA00014-6) (red), or 0.2 ug Control Antibody. Cells were fixed and permeabilized with Transcription Factor Staining Buffer Kit (PF00011).