

For Research Use Only.
Not For Use In Diagnostics.

CoraLite488-conjugated Donkey Anti-Mouse IgG(H+L)

Catalog Number:SA00013-5



Information

Catalog Number:

SA00013-5

Host:

Donkey

Applications:

IF, FC

Reactivity:

Mouse (Minimal Cross Reactivity:

Bovine, Chicken, Goat, Guinea Pig,

Syrian Hamster, Horse, Human,

Rabbit, Sheep Serum Proteins)

Physical State:

Liquid

Conjugation:

CoraLite®488

Recommended Dilutions

1:100 – 1:500

Preservative

0.02% Sodium Azide

Fluorophore

CL488 Fluorescent Dye
Amax=488 nm; Emax=515 nm

Stabilizer

5 mg/ml BSA

Safety Notes

This product is for research use only, not for diagnostic or therapeutic use.

Storage

Storage:

Store at -20°C. Stable for one year after shipment.

Storage Buffer:

0.01 M Sodium phosphate, 0.25 M NaCl, 50% glycerol, 5 mg/ml BSA, 0.02% Sodium Azide, pH 7.6.

Aliquoting is unnecessary for -20°C storage

Purity

The antibody was purified from antisera by immunoaffinity chromatography using antigens coupled to agarose beads.

For technical support and original validation data for this product please
contact:

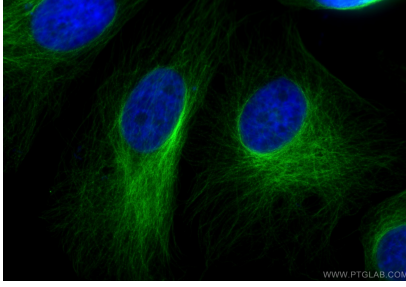
T: 4006900926

E: Proteintech-CN@ptglab.com

W: ptgcn.com

This product is exclusively available under Proteintech
Group brand and is not available to purchase from any
other manufacturer.

Selected Validation Data



Immunofluorescent analysis of (4% PFA) fixed HeLa cells using Alpha Tubulin antibody (66031-1-Ig, Clone: 1E4C11) at dilution of 1:400 and CoraLite®488-Conjugated AffiniPure Donkey Anti-Mouse IgG(H+L) (SA00013-5).