

For Research Use Only.
Not For Use In Diagnostics.

Biotin-conjugated Donkey Anti-Rabbit IgG(H+L)

Catalog Number:SA00004-11



Information

Catalog Number:

SA00004-11

Host:

Donkey

Applications:

ELISA, WB, IHC/ICC

Reactivity:

Rabbit

Physical State:

Liquid

Conjugation:

Biotin

Recommended Dilutions

1:100 – 1:1000 for enzyme immunohistochemistry on tissue sections
1:4000-1:80000 for ELISA and Western blotting with chromogenic substrates

Preservative

0.01% Sodium Azide

Stabilizer

5 mg/ml BSA

Safety Notes

This product is for research use only, not for diagnostic or therapeutic use.

Storage

Storage:

Store at -20°C. Stable for one year after shipment.

Storage Buffer:

0.01 M Sodium phosphate, 0.25 M NaCl, 50% glycerol, 5 mg/ml BSA, 0.01% Sodium Azide, pH 7.6.

Aliquoting is unnecessary for -20°C storage

Purity

The antibody was purified from antisera by immunoaffinity chromatography using antigens coupled to agarose beads.

For technical support and original validation data for this product please contact:

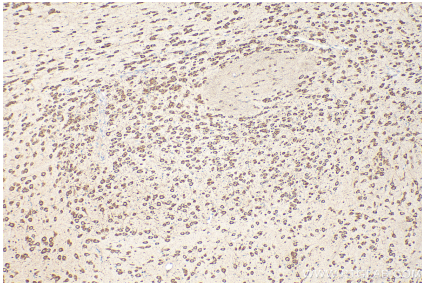
T: 4006900926

E: Proteintech-CN@ptglab.com

W: ptgcn.com

This product is exclusively available under Proteintech Group brand and is not available to purchase from any other manufacturer.

Selected Validation Data



Immunohistochemical analysis of paraffin-embedded mouse brain tissue slide using 10095-2-AP (EEF1B2 antibody) and Biotin-conjugated Donkey Anti-Rabbit IgG(H+L) (SA00004-11) at dilution of 1:200.