

For Research Use Only.
Not For Use In Diagnostics.

HRP-conjugated Donkey Anti-Rabbit IgG(H+L)

Catalog Number:SA00001-9



www.ptglab.com

Information

Catalog Number:

SA00001-9

Host:

Donkey

Applications:

ELISA, WB, Dot blot

Reactivity:

Rabbit (Minimal Cross Reactivity:

Bovine, Chicken, Goat, Guinea Pig,

Syrian Hamster, Horse, Human,

Mouse, Rat, Sheep Serum Proteins)

Physical State:

Liquid

Conjugation:

HRP

Recommended Dilutions

For western blotting with ECL substrates:

ECL Detection Kit (PK10001): 1:2,000-1:10,000

Sensitive ECL Detection Kit (PK10002):1:5,000-1:20,000

Ultrasensitive ECL Detection Kit (PK10003): 1:10,000-40,000

For ELISA and Western blotting with chromogenic substrates: 1:1,000-1:20,000

Stabilizer

3 mg/ml BSA

Safety Notes

This product is for research use only, not for diagnostic or therapeutic use.

Storage

Storage:

Store at -20°C. Stable for one year after shipment.

Storage Buffer:

0.01 M Sodium phosphate, 0.25 M NaCl, 50% glycerol, 3 mg/ml BSA, pH 7.6.

Aliquoting is unnecessary for -20°C storage

Purity

The antibody was purified from antisera by immunoaffinity chromatography using antigens coupled to agarose beads.

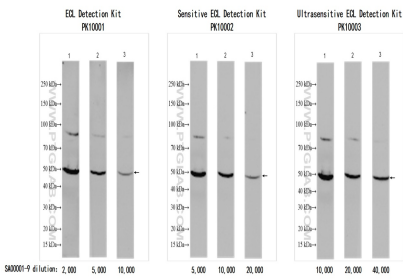
For technical support and original validation data for this product please contact:

T: 4006900926

E: Proteintech-CN@ptglab.com W: ptgcn.com

This product is exclusively available under Proteintech Group brand and is not available to purchase from any other manufacturer.

Selected Validation Data



Antigen: HEK-293 whole cell lysate Loading volume: 30 μ g/lane
Primary antibody: RUVBL1 (10210-2-AP) Dilution: 1: 10,000
Secondary antibody: SA00001-9 Dilution: see picture
Exposure time: 120s