

For Research Use Only.
Not For Use In Diagnostics.

HRP-conjugated Goat Anti-Rabbit IgG(H+L)

Catalog Number:SA00001-2



Information

| | |
|---------------------|-----------------|
| Catalog Number: | Reactivity: |
| SA00001-2 | Rabbit |
| Host: | Physical State: |
| Goat | Liquid |
| Applications: | Conjugation: |
| ELISA, WB, Dot blot | HRP |

Recommended Dilutions

For western blotting with ECL substrates:
ECL Detection Kit (PK10001): 1:2,000-1:10,000
Sensitive ECL Detection Kit (PK10002): 1:5,000-1:20,000
Ultrasensitive ECL Detection Kit (PK10003): 1:10,000-40,000
For ELISA and Western blotting with chromogenic substrates: 1:1,000-1:20,000

Stabilizer

3 mg/ml BSA

Safety Notes

This product is for research use only, not for diagnostic or therapeutic use.

Storage

Storage:
Store at -20°C. Stable for one year after shipment.
Storage Buffer:
0.01 M Sodium phosphate, 0.25 M NaCl, 50% glycerol, 3 mg/ml BSA, pH 7.6.
Aliquoting is unnecessary for -20°C storage

Purity

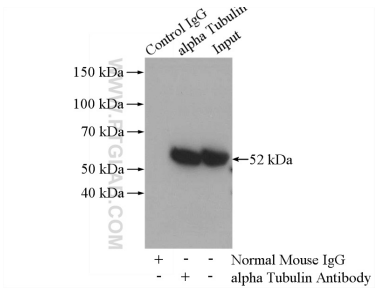
The antibody was purified from antisera by immunoaffinity chromatography using antigens coupled to agarose beads.

For technical support and original validation data for this product please contact:

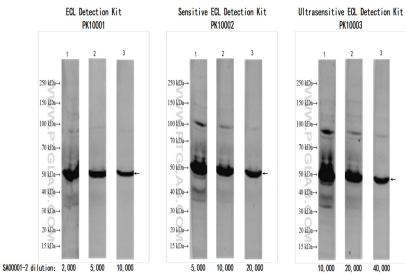
T: 4006900926 E: Proteintech-CN@ptglab.com W: ptgcn.com

This product is exclusively available under Proteintech Group brand and is not available to purchase from any other manufacturer.

Selected Validation Data



IP Result of anti-alpha Tubulin (IP: 66031-1-Ig, 5ug; Detection:11224-1-AP 1:1000) with HeLa cells lysate 2800ug. SA00001-2 (HRP-conjugated Affinipure Goat Anti-Rabbit IgG(H+L)) as the secondary antibody.



Antigen: HEK-293 whole cell lysate Loading volume: 30 μ g/lane
Primary antibody: RUVBL1 (10210-2-AP) Dilution: 1: 10,000
Secondary antibody: SA00001-2 Dilution: see picture
Exposure time: 60s