

For Research Use Only.
Not For Use In Diagnostics.

HRP-conjugated Goat Anti-Human IgG(H+L)

Catalog Number:SA00001-17



Information

Catalog Number:
SA00001-17
Host:
Goat
Applications:
ELISA, WB, Dot blot

Reactivity:
Human
Physical State:
Liquid
Conjugation:
HRP

Recommended Dilutions

1:2000-1:10,000 for western blotting with ECL substrates
1:1000-1:20,000 for ELISA and Western blotting with chromogenic substrates

Stabilizer

3 mg/ml BSA

Safety Notes

This product is for research use only, not for diagnostic or therapeutic use.

Storage

Storage:
Store at -20°C. Stable for one year after shipment.
Storage Buffer:
0.01 M Sodium phosphate, 0.25 M NaCl, 50% glycerol, 3 mg/ml BSA, pH 7.6.
Aliquoting is unnecessary for -20°C storage

Purity

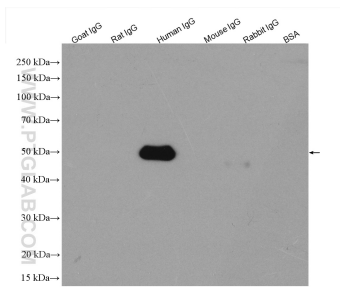
The antibody was purified from antisera by immunoaffinity chromatography using antigens coupled to agarose beads.

For technical support and original validation data for this product please contact:

T: 4006900926 E: Proteintech-CN@ptglab.com W: ptgcn.com

This product is exclusively available under Proteintech Group brand and is not available to purchase from any other manufacturer.

Selected Validation Data



IgG proteins of various species were subjected to SDS PAGE followed by western blot with SA00001-17 (HRP-conjugated Goat Anti-Human IgG(H+L) at dilution of 1:6000 incubated at room temperature for 1.5 hours.