

For Research Use Only

Multi-rAb® RBM25 Multi-Recombinant antibody

Catalog Number: RMX00066



Basic Information

Catalog Number:

RMX00066

Source:

Rabbit

Isotype:

IgG

GenBank Accession Number:

BC113389

GeneID (NCBI):

58517

UNIPROT ID:

P49756

Full Name:

RNA binding motif protein 25

Calculated MW:

843 aa, 100 kDa

Observed MW:

100-120 kDa

Purification Method:

N/A

Recommended Dilutions:

WB: 1:5000-1:50000

IP: 0.5-4.0 ug for 1.0-3.0 mg of total protein lysate

IHC: 1:2000-1:8000

IF/ICC: 1:500-1:2000

Applications

Tested Applications:

WB, IHC, IF/ICC, IP, ELISA

Species Specificity:

human, mouse, rat

Note-IHC: suggested antigen retrieval with TE buffer pH 9.0; (*) Alternatively, antigen retrieval may be performed with citrate buffer pH 6.0

Positive Controls:

WB : HEK-293 cells, PC-12 cells, Jurkat cells, mouse brain tissue

IP : HEK-293 cells,

IHC : human colon cancer tissue,

IF/ICC : HeLa cells,

Background Information

RNA-binding protein 25 (RBM25), also named as Protein S164 or RNPC7, is a 843 amino acid protein, which contains one RRM domain and one PWI domain. RBM25 localizes in the nucleus and cytoplasm. RBM25 acts as a regulator of alternative pre-mRNA splicing and is involved in apoptotic cell death through the regulation of the apoptotic factor BCL2L1 isoform expression.

Storage

Storage:

Store at -20°C. Stable for one year after shipment.

Storage Buffer:

PBS with 0.02% sodium azide and 50% glycerol.

Aliquoting is unnecessary for -20°C storage

For technical support and original validation data for this product please contact:

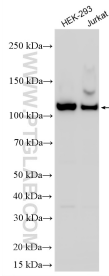
T: 4006900926

E: Proteintech-CN@ptglab.com

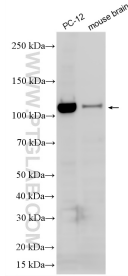
W: ptgcn.com

This product is exclusively available under Proteintech Group brand and is not available to purchase from any other manufacturer.

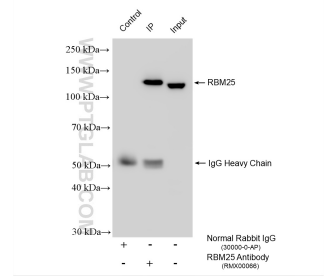
Selected Validation Data



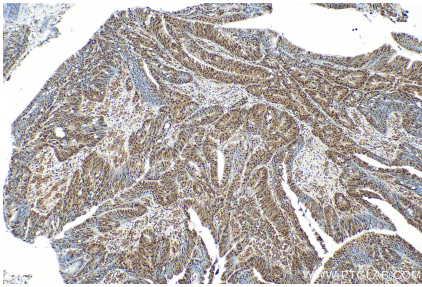
Various lysates were subjected to SDS PAGE followed by western blot with RMX00066 (RBM25 antibody) at dilution of 1:10000 incubated at room temperature for 1.5 hours.



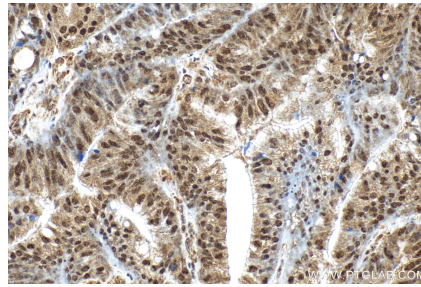
Various lysates were subjected to SDS PAGE followed by western blot with RMX00066 (RBM25 antibody) at dilution of 1:10000 incubated at room temperature for 1.5 hours.



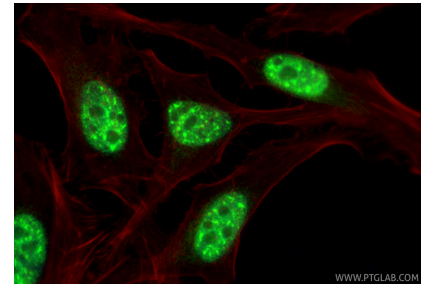
IP result of anti-RBM25 (IP:RMX00066, 4ug; Detection:RMX00066 1:5000) with HEK-293 cells lysate 1000 ug.



Immunohistochemical analysis of paraffin-embedded human colon cancer tissue slide using RMX00066 (RBM25 antibody) at dilution of 1:4000 (under 10x lens). Heat mediated antigen retrieval with Tris-EDTA buffer (pH 9.0).



Immunohistochemical analysis of paraffin-embedded human colon cancer tissue slide using RMX00066 (RBM25 antibody) at dilution of 1:4000 (under 40x lens). Heat mediated antigen retrieval with Tris-EDTA buffer (pH 9.0).



Immunofluorescent analysis of (4% PFA) fixed HeLa cells using RBM25 antibody (RMX00066) at dilution of 1:1000 and CoraLite@488-Conjugated Goat Anti-Rabbit IgG(H+L) (SA00013-2), CL594-Phalloidin (red).