

For Research Use Only

# Multi-rAb® RPL10A Multi-Recombinant antibody

Catalog Number: RMX00046



## Basic Information

Catalog Number:

RMX00046

Source:

Rabbit

Isotype:

IgG

GenBank Accession Number:

BC006791

GeneID (NCBI):

4736

UNIPROT ID:

P62906

Full Name:

ribosomal protein L10a

Calculated MW:

25 kDa

Observed MW:

25 kDa

Purification Method:

N/A

Recommended Dilutions:

WB: 1:5000-1:50000

IP: 0.5-4.0 ug for 1.0-3.0 mg of total protein lysate

IHC: 1:250-1:1000

IF/ICC: 1:200-1:800

## Applications

Tested Applications:

WB, IHC, IF/ICC, IP, ELISA

Species Specificity:

human, mouse, rat

**Note-IHC: suggested antigen retrieval with TE buffer pH 9.0; (\*) Alternatively, antigen retrieval may be performed with citrate buffer pH 6.0**

Positive Controls:

WB: HeLa cells, HepG2 cells, mouse spleen tissue, rat spleen tissue

IP: HepG2 cells,

IHC: mouse liver tissue,

IF/ICC: HepG2 cells,

## Background Information

RPL10A (Ribosomal Protein L10a) is a component of the 60S subunit of the ribosome and belongs to the L1P family of ribosomal proteins. It is located in the cytoplasm. RPL10A is ubiquitously expressed in various tissues, it plays a crucial role in ribosome biogenesis and protein synthesis. In addition to its role in protein synthesis, RPL10A has been implicated in cell proliferation, embryogenesis, and organogenesis. PMID: 29953919

## Storage

Storage:

Store at -20°C. Stable for one year after shipment.

Storage Buffer:

PBS with 0.02% sodium azide and 50% glycerol.

Aliquoting is unnecessary for -20°C storage

For technical support and original validation data for this product please contact:

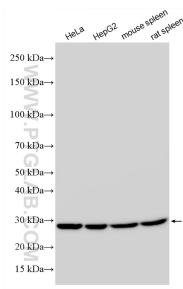
T: 4006900926

E: [Proteintech-CN@ptglab.com](mailto:Proteintech-CN@ptglab.com)

W: [ptgcn.com](http://ptgcn.com)

**This product is exclusively available under Proteintech Group brand and is not available to purchase from any other manufacturer.**

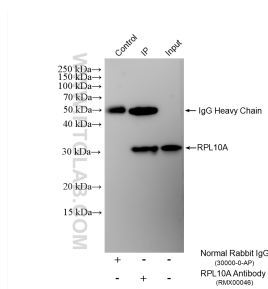
## Selected Validation Data



Various lysates were subjected to SDS PAGE followed by western blot with RMX00046 (RPL10A antibody) at dilution of 1:15000 incubated at room temperature for 1.5 hours.

Immunohistochemical analysis of paraffin-embedded mouse liver tissue slide using RMX00046 (RPL10A antibody) at dilution of 1:500 (under 10x lens). Heat mediated antigen retrieval with Tris-EDTA buffer (pH 9.0).

Immunofluorescent analysis of (-20°C Ethanol) fixed HepG2 cells using RPL10A antibody (RMX00046) at dilution of 1:400 and CoraLite®488-Conjugated Goat Anti-Rabbit IgG(H+L) (SA00013-2).



IP result of anti-RPL10A (IP:RMX00046, 4ug; Detection:RMX00046 1:10000) with HepG2 cells lysate 1600 ug.