

For Research Use Only

Multi-rAb® TAGLN Multi-Recombinant antibody

Catalog Number: RMX00045



Basic Information

Catalog Number:

RMX00045

Source:

Rabbit

Isotype:

IgG

GenBank Accession Number:

BC004927

GeneID (NCBI):

6876

UNIPROT ID:

Q01995

Full Name:

transgelin

Calculated MW:

22 kDa

Observed MW:

19-22 kDa

Purification Method:

N/A

Recommended Dilutions:

WB: 1:20000-1:100000

IHC: 1:2000-1:8000

IF-P: 1:50-1:500

Applications

Tested Applications:

WB, IHC, IF-P, ELISA

Species Specificity:

human, mouse, rat

Note-IHC: suggested antigen retrieval with TE buffer pH 9.0; (*) Alternatively, antigen retrieval may be performed with citrate buffer pH 6.0

Positive Controls:

WB : mouse colon tissue, mouse stomach tissue, rat colon tissue, rat stomach tissue

IHC : mouse heart tissue, human kidney tissue

IF-P : mouse heart tissue,

Background Information

The transgelin family is a protein group belonging to the 22kd actin-related calponin superfamily. Of all three isoforms, transgelin 1 is the best characterized. Transgelin 1, or SM22alpha, is a specific marker for differentiated smooth muscle cells. Transgelin 2, also known as SM22 beta, is expressed by both smooth and non-smooth muscle cells in a temporally and spatially regulated pattern. Transgelin 3, also known as NP25, is only found in highly differentiated neuronal cells. This antibody can cross-react with other two transgenes based on the sequence similarity.

Storage

Storage:

Store at -20°C. Stable for one year after shipment.

Storage Buffer:

PBS with 0.02% sodium azide and 50% glycerol.

Aliquoting is unnecessary for -20°C storage

For technical support and original validation data for this product please contact:

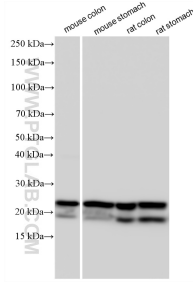
T: 4006900926

E: Proteintech-CN@ptglab.com

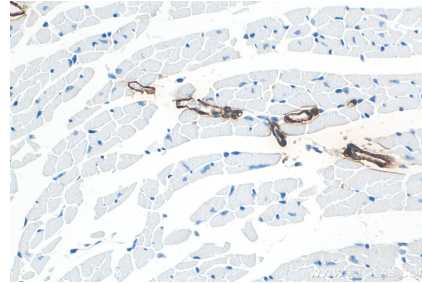
W: ptgcn.com

This product is exclusively available under Proteintech Group brand and is not available to purchase from any other manufacturer.

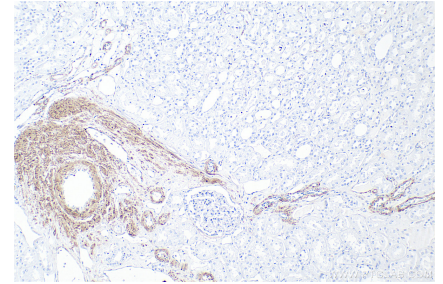
Selected Validation Data



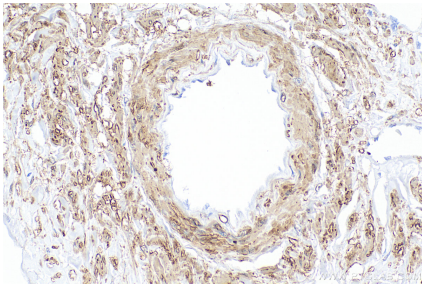
Various lysates were subjected to SDS PAGE followed by western blot with RMX00045 (TAGLN antibody) at dilution of 1:60000 incubated at room temperature for 1.5 hours.



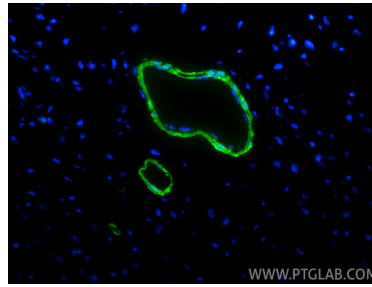
Immunohistochemical analysis of paraffin-embedded mouse heart tissue slide using RMX00045 (TAGLN antibody) at dilution of 1:4000 (under 40x lens). Heat mediated antigen retrieval with Tris-EDTA buffer (pH 9.0).



Immunohistochemical analysis of paraffin-embedded human kidney tissue slide using RMX00045 (TAGLN antibody) at dilution of 1:4000 (under 10x lens). Heat mediated antigen retrieval with Tris-EDTA buffer (pH 9.0).



Immunohistochemical analysis of paraffin-embedded human kidney tissue slide using RMX00045 (TAGLN antibody) at dilution of 1:4000 (under 40x lens). Heat mediated antigen retrieval with Tris-EDTA buffer (pH 9.0).



Immunofluorescent analysis of (4% PFA) fixed paraffin-embedded mouse heart tissue using TAGLN antibody (RMX00045) at dilution of 1:200 and CoraLite® 488-Conjugated Goat Anti-Rabbit IgG(H+L) (SA00013-2). Heat mediated antigen retrieval with Tris-EDTA buffer (pH 9.0).