

For Research Use Only

Multi-rAb® VAMP8 Multi-Recombinant antibody

Catalog Number: RMX00044



Basic Information

Catalog Number:

RMX00044

Source:

Rabbit

Isotype:

IgG

GenBank Accession Number:

BC001634

GeneID (NCBI):

8673

UNIPROT ID:

Q9BV40

Full Name:

vesicle-associated membrane protein 8 (endobrevin)

Calculated MW:

11 kDa

Observed MW:

15 kDa

Purification Method:

N/A

Recommended Dilutions:

WB: 1:5000-1:50000

IP: 0.5-4.0 ug for 1.0-3.0 mg of total protein lysate

IHC: 1:500-1:2000

IF/ICC: 1:200-1:800

Applications

Tested Applications:

WB, IHC, IF/ICC, IP, ELISA

Species Specificity:

human, mouse, rat

Note-IHC: suggested antigen retrieval with TE buffer pH 9.0; (*) Alternatively, antigen retrieval may be performed with citrate buffer pH 6.0

Positive Controls:

WB: HL-60 cells, THP-1 cells, mouse kidney tissue, rat kidney tissue

IP: THP-1 cells,

IHC: human placenta tissue,

IF/ICC: HeLa cells,

Background Information

VAMP8, also named endobrevin, is a member of the vesicle-associated membrane protein (VAMP)/synaptobrevin family and the SNARE (soluble NSF-attachment protein receptor) superfamily. Characterized by a common sequence called the SNARE motif, SNARE proteins are involved in membrane fusion and vesicular transport (PMID: 11252968). VAMP8 is involved in autophagy by directly controlling the fusion of autophagosomes with the lysosomal membrane. It is required for dense-granule secretion in platelets and plays a role in regulated enzyme secretion in pancreatic acinar cells. VAMP8 is also involved in the abscission of the midbody during cell division, which leads to completely separate daughter cells.

Storage

Storage:

Store at -20°C. Stable for one year after shipment.

Storage Buffer:

PBS with 0.02% sodium azide and 50% glycerol.

Aliquoting is unnecessary for -20°C storage

For technical support and original validation data for this product please contact:

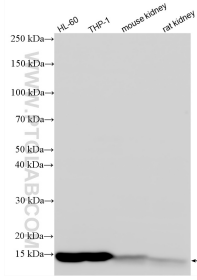
T: 4006900926

E: Proteintech-CN@ptglab.com

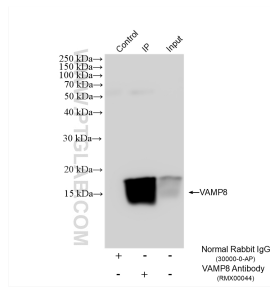
W: ptgcn.com

This product is exclusively available under Proteintech Group brand and is not available to purchase from any other manufacturer.

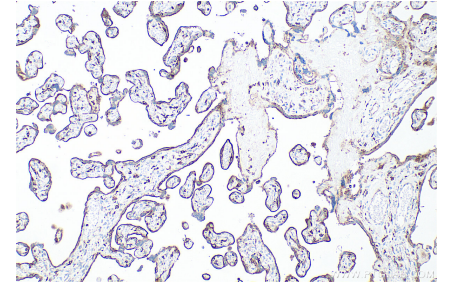
Selected Validation Data



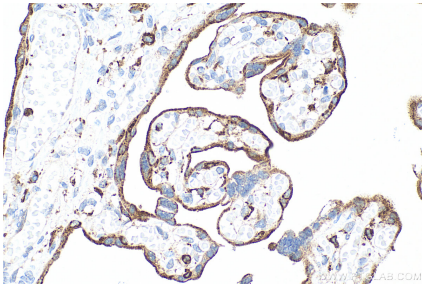
Various lysates were subjected to SDS PAGE followed by western blot with RMX00044 (VAMP8 antibody) at dilution of 1:10000 incubated at room temperature for 1.5 hours.



IP result of anti-VAMP8 (IP: RMX00044, 4ug; Detection: RMX00044 1:10000) with THP-1 cells lysate 1800 ug.



Immunohistochemical analysis of paraffin-embedded human placenta tissue slide using RMX00044 (VAMP8 antibody) at dilution of 1:1000 (under 10x lens). Heat mediated antigen retrieval with Tris-EDTA buffer (pH 9.0).



Immunofluorescent analysis of (4% PFA) fixed HeLa cells using VAMP8 antibody (RMX00044) at dilution of 1:400 and CoraLite®488-Conjugated Goat Anti-Rabbit IgG(H+L) (SA00013-2).

Immunohistochemical analysis of paraffin-embedded human placenta tissue slide using RMX00044 (VAMP8 antibody) at dilution of 1:1000 (under 40x lens). Heat mediated antigen retrieval with Tris-EDTA buffer (pH 9.0).