

For Research Use Only

# Multi-rAb™ STMN2 Multi-Recombinant antibody

Catalog Number: RMX00021



## Basic Information

Catalog Number:

RMX00021

Concentration:

600 µg/ml

Source:

Rabbit

Isotype:

IgG

GenBank Accession Number:

BC006302

GeneID (NCBI):

11075

UNIPROT ID:

Q93045

Full Name:

stathmin-like 2

Calculated MW:

21 kDa

Observed MW:

18-21 kDa

Purification Method:

N/A

Recommended Dilutions:

WB: 1:5000-1:50000

IHC: 1:200-1:800

IF/ICC: 1:50-1:500

## Applications

Tested Applications:

WB, IHC, IF/ICC, ELISA

Species Specificity:

human, mouse, rat

**Note-IHC: suggested antigen retrieval with TE buffer pH 9.0; (\*) Alternatively, antigen retrieval may be performed with citrate buffer pH 6.0**

Positive Controls:

WB : SH-SY5Y cells, Neuro-2a cells, PC-12 cells, mouse brain tissue, rat brain tissue

IHC : mouse brain tissue,

IF/ICC : SH-SY5Y cells,

## Background Information

### Storage

Storage:

Store at -20°C. Stable for one year after shipment.

Storage Buffer:

PBS with 0.02% sodium azide and 50% glycerol, pH7.3

Aliquoting is unnecessary for -20°C storage

For technical support and original validation data for this product please contact:

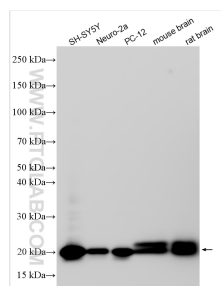
T: 4006900926

E: [Proteintech-CN@ptglab.com](mailto:Proteintech-CN@ptglab.com)

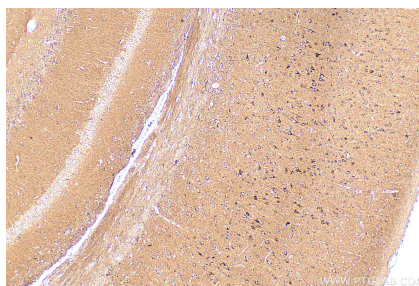
W: [ptgcn.com](http://ptgcn.com)

This product is exclusively available under Proteintech Group brand and is not available to purchase from any other manufacturer.

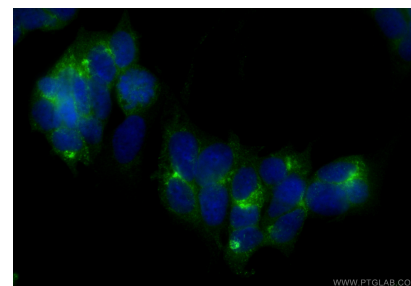
## Selected Validation Data



Various lysates were subjected to SDS PAGE followed by western blot with RMX00021 (STMN2 antibody) at dilution of 1:40000 incubated at room temperature for 1.5 hours.



Immunohistochemical analysis of paraffin-embedded mouse brain tissue slide using RMX00021 (STMN2 antibody) at dilution of 1:400 (under 10x lens). Heat mediated antigen retrieval with Tris-EDTA buffer (pH 9.0).



Immunofluorescent analysis of (4% PFA) fixed SH-SY5Y cells using STMN2 antibody (RMX00021) at dilution of 1:200 and CoraLite®488-Conjugated Goat Anti-Rabbit IgG(H+L) (SA00013-2).