

For Research Use Only

Multi-rAb™ SAT1 Multi-Recombinant antibody

Catalog Number: RMX00008



Basic Information

Catalog Number:

RMX00008

Concentration:

1000 µg/ml

Source:

Rabbit

Isotype:

IgG

GenBank Accession Number:

BC008424

GeneID (NCBI):

6303

UNIPROT ID:

P21673

Full Name:

spermidine/spermine N1-acetyltransferase 1

Calculated MW:

20 kDa

Observed MW:

15-25 kDa

Purification Method:

N/A

Recommended Dilutions:

WB 1:1000-1:6000

IHC 1:50-1:500

IF/ICC 1:50-1:500

Applications

Tested Applications:

WB, IHC, IF/ICC, ELISA

Species Specificity:

human, mouse

Note-IHC: suggested antigen retrieval with TE buffer pH 9.0; (*) Alternatively, antigen retrieval may be performed with citrate buffer pH 6.0

Positive Controls:

WB : HEK-293 cells,

IHC : mouse brain tissue,

IF/ICC : RAW 264.7 cells,

Background Information

Storage

Storage:

Store at -20°C. Stable for one year after shipment.

Storage Buffer:

PBS with 0.02% sodium azide and 50% glycerol pH 7.3.

Aliquoting is unnecessary for -20°C storage

For technical support and original validation data for this product please contact:

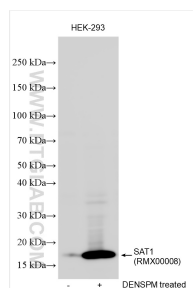
T: 4006900926

E: Proteintech-CN@ptglab.com

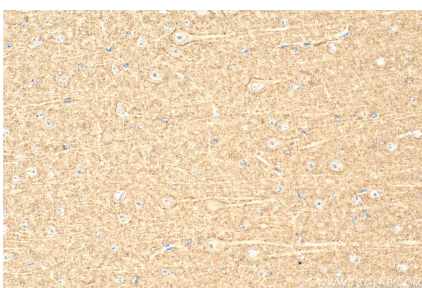
W: ptgcn.com

This product is exclusively available under Proteintech Group brand and is not available to purchase from any other manufacturer.

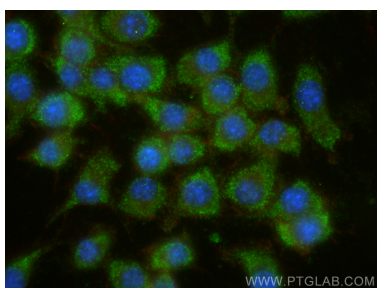
Selected Validation Data



Untreated and DENS PM treated HEK-293 cells were subjected to SDS PAGE followed by western blot with RMX00008 (SAT1 antibody) at dilution of 1:3000 incubated at room temperature for 1.5 hours.



Immunohistochemical analysis of paraffin-embedded mouse brain tissue slide using RMX00008 (SAT1 antibody) at dilution of 1:200 (under 40x lens). Heat mediated antigen retrieval with Tris-EDTA buffer (pH 9.0).



Immunofluorescent analysis of (-20°C Ethanol) fixed RAW 264.7 cells using SAT1 antibody (RMX00008) at dilution of 1:200 and CoraLite® 488-Conjugated Goat Anti-Rabbit IgG(H+L) (SA00013-2), CL594-Phalloidin (red).