

For Research Use Only.
Not For Use In Diagnostics.

Multi-rAb™ CoraLite® Plus 750- Goat Anti-Mouse Recombinant Secondary Antibody (H+L)



Catalog Number:RGAM006

Information

Catalog Number:	Reactivity:
RGAM006	Mouse
Host:	Physical State:
Goat	Liquid
Applications:	Conjugation:
WB (Fluorescent), IF, FC	CoraLite® Plus 750

Recommended Dilutions

1:200-1:1000 for IF and FC
1:5000-1:20,000 for western blotting

Fluorophore

CoraLite® Plus 750, Amax=755±4 nm; Emax=780±4 nm

Safety Notes

This product is for research use only, not for diagnostic or therapeutic use.

Storage

Storage:
Store at -20°C. Stable for one year after shipment.
Storage Buffer:
PBS with 50% glycerol, 10 mg/mL BSA, 0.1% Proclin-300, pH 7.4.
Aliquoting is unnecessary for -20°C storage

Purity

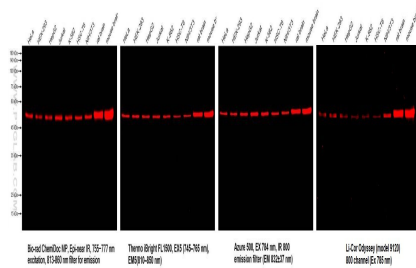
The antibody was purified from culture media supernatant by immunoaffinity chromatography using Protein G beads.

For technical support and original validation data for this product please contact:

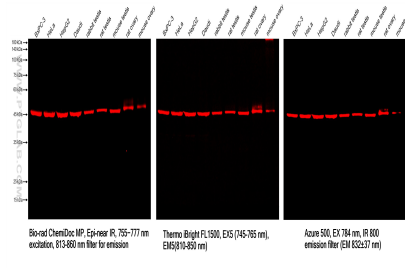
T: 4006900926 E: Proteintech-CN@ptglab.com W: ptgcn.com

This product is exclusively available under Proteintech Group brand and is not available to purchase from any other manufacturer.

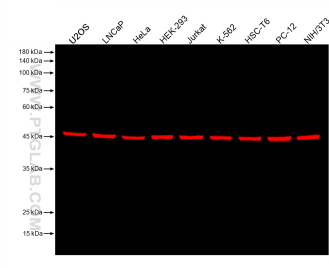
Selected Validation Data



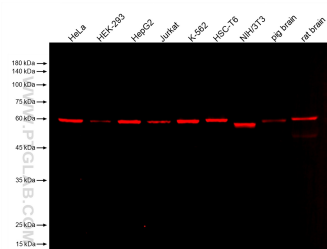
Various lysates were subjected to SDS-PAGE followed by western blot with mouse anti- β -Tubulin monoclonal antibody (Cat.NO. 66240-1-Ig, isotype IgG2a). Multi-Rab™ Coralite® Plus 750-Goat Anti-Mouse Recombinant Secondary antibody (H+L) RGAM006 was used at 1:10000 for detection. Different devices were used for imaging for the same membrane.



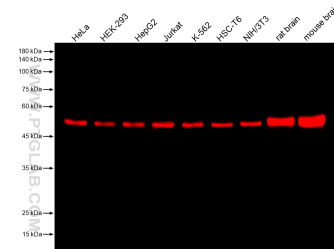
Various lysates were subjected to SDS-PAGE followed by western blot with mouse anti-ZNF174 monoclonal antibody (Cat.NO. 68426-1 Ig, isotype IgG3). Multi-rAb™ CoraLite® Plus 750-Goat Anti-mouse Recombinant Secondary Antibody (H+L) RGAM006 was used at 1:10000 for detection. Different devices were used for imaging for the same membrane.



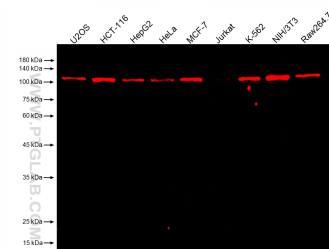
Various lysates were subjected to SDS-PAGE followed by western blot with mouse anti-EIF3E monoclonal antibody (Cat.No. 67095-1-Ig, isotype IgG1) at dilution of 1:50000. Multi-Rab™ CoraLite® Plus 750-Goat Anti-Mouse Recombinant Secondary Antibody (H+L) RGAM006 was used at 1:10000 for detection.



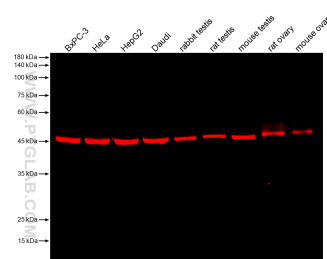
Various lysates were subjected to SDS-PAGE followed by western blot with mouse anti-Catalase monoclonal antibody (Cat.No. 66765-1-Ig, isotype IgG1) at dilution of 1:10000. Multi-rAb™ CoraLite® Plus 750-Goat Anti-Mouse Recombinant Secondary Antibody (H+L) RGAM006 was used at 1:10000 for detection.



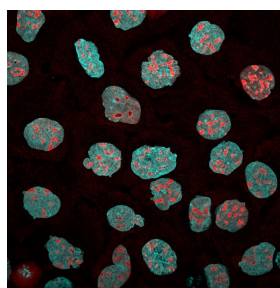
Various lysates were subjected to SDS-PAGE followed by western blot with mouse anti- β -Tubulin monoclonal antibody (Cat.NO. 66240-1 Ig, isotype IgG2a) at dilution of 1:100000. Multi-rab™ CoraLite® Plus 750-Goat Anti-Mouse Recombinant Secondary Antibody (H+L) RGAM006 was used at 1:10000 for detection.



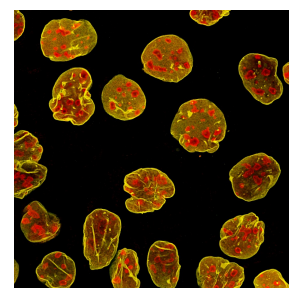
Various lysates were subjected to SDS-PAGE followed by western blot with mouse anti-FAK monoclonal antibody (Cat.No. 66258-1-Ig, isotype IgG2c) at dilution of 1:5000. Multi-Rab™ CoraLite® Plus 750-Goat Anti-Mouse Recombinant Secondary Antibody (H+L) RGA006 was used at 1:10000 for detection.



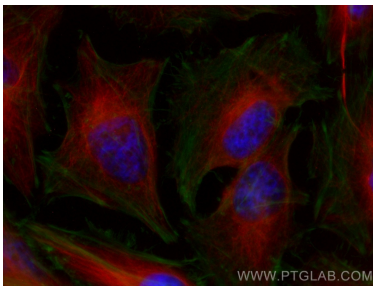
Various lysates were subjected to SDS-PAGE followed by western blot with mouse anti-ZNF174 monoclonal antibody (Cat.No. 68426-1-Ig, isotype IgG3) at dilution of 1:2000. Multi-rAb™ Coralite® Plus 750-Goat Anti-Mouse Recombinant Secondary Antibody (H+L) RGA006 was used at 1:10000 for detection.



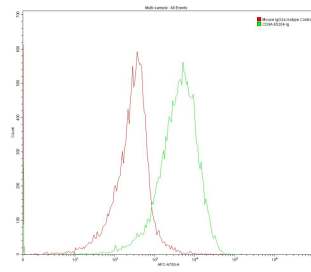
Immunofluorescence of A431 cells: PFA-fixed cells were stained with anti-B23 [60096–1 Ig], followed by Multi-*rAb*TM Coralite® Plus 750-GO Anti-Mouse Recombinant Secondary Antibody (H+L) (RGAM006, 1:500, red), nuclei stained with DAPI (cyan). Confocal images were acquired with a 63x oil objective and post-processed. Images were recorded at the Core Facility Bioimaging at the Biomedical Center, LMU Munich. Device setting for target: Laser Ex max 764nm. filter Em max 775nm.



Immunofluorescence of A431 cells: PFA-fixed cells were co-stained with mouse anti-B23 (60096-1-Ig) and rabbit anti-Lamin B1 (12987-1-AP), followed by Multi-rAb™ CoraLite® Plus 750-Goat Anti-Mouse Recombinant Secondary Antibody (H+L) (RGAM006, 1:500, red) and Nano-Secondary srb2GCL55-1 (yellow). Confocal images were acquired with a 63x oil objective and post-processed. Images were recorded at the Core Facility Bioimaging at the Biomedical Center, LMU Munich. Device setting for RGAM006: Laser Ex max 764nm, filter Em max 775nm.



Immunofluorescent analysis of (4% PFA) fixed HeLa cells using Alpha Tubulin antibody (66031-1-Ig, Clone: 1E4C11) at dilution of 1:400 and Multi-rAb™ CoraLite® Plus 750-Goat Anti-Mouse Recombinant Secondary Antibody (H+L) (RGAM006), CL488-Phalloidin (green).



1×10^6 MOLT4 were surface stained with 0.2 μ g Anti-Human CD8 (65204-1-Ig, Clone: UCHT4) and Mouse IgG2a Isotype Control 66360-2-Ig. Multi-rAb™ CoraLite® Plus 647-Goat Anti-Mouse Recombinant Secondary Antibody (H+L) RGAM006 was used at 1:500 for detection.