

For Research Use Only

FcZero-rAb® PE-Cyanine7 Anti-Human CD209 Rabbit Recombinant Antibody

Catalog Number:PY7-FcA98156



Basic Information

Catalog Number:

PY7-FcA98156

Concentration:

100tests, 5 ul/test

Source:

Rabbit

Isotype:

IgG

Immunogen Catalog Number:

EG0062

GenBank Accession Number:

BC110615

GeneID (NCBI):

30835

UNIPROT ID:

Q9NNX6

Full Name:

CD209 molecule

Calculated MW:

404 aa, 45.7 kDa

Purification Method:

Protein A purification

CloneNo.:

240907A4

Recommended Dilutions:

FC: 5 ul per 10⁶ cells in a 100 µl suspension

Excitation/Emission maxima wavelengths:

496 nm, 565 nm / 778 nm

Applications

Tested Applications:

FC

Species Specificity:

human

Positive Controls:

FC : Human immature monocyte-derived dendritic cells,

Background Information

CD209 (DC-SIGN, CLEC4L) is a C-type lectin receptor that is involved in the innate immune system and recognizes numerous evolutionarily divergent pathogens, including bacteria, viruses, and parasites. CD209 is preferentially expressed on dendritic cells (DCs). It mediates transient adhesion of DCs with T cells. It has been reported that CD209 plays a role in capture and transmission of HIV from DC to T cells (PMID: 10721995).

Storage

Storage:

Store at 2-8°C. Avoid exposure to light. Stable for one year after shipment.

Storage Buffer:

PBS with 0.09% sodium azide and 0.5% BSA, pH7.3

For technical support and original validation data for this product please contact:

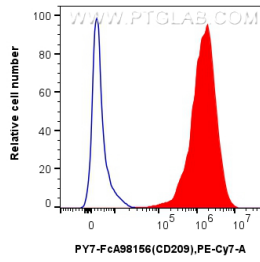
T: 4006900926

E: Proteintech-CN@ptglab.com

W: ptgcn.com

This product is exclusively available under Proteintech Group brand and is not available to purchase from any other manufacturer.

Selected Validation Data



1x10⁶ human immature monocyte-derived dendritic cells were surface stained with 5 ul PE-Cyanine7 Anti-Human CD209 Rabbit RecAb (PY7-FcA98156, Clone: 240907A4) (red) or FcZero-rAb™ PE-Cyanine7 Rabbit IgG Isotype Control Recombinant Antibody (PY7-FcA98136, Clone: 240953C9) (blue). Cells were incubated with MonoZero™ Monocytes blocking Reagent(PF00020) prior to staining. Cells were not fixed.