

For Research Use Only

PE-Cyanine7 Anti-Human CTLA-4/CD152 Rabbit Recombinant Antibody

Catalog Number: PY7-98078



Basic Information

Catalog Number:

PY7-98078

Concentration:

100tests, 5 ul/test

Source:

Rabbit

Isotype:

IgG

Immunogen Catalog Number:

EG0972

GenBank Accession Number:

BC070162

GeneID (NCBI):

1493

UNIPROT ID:

P16410

Full Name:

cytotoxic T-lymphocyte-associated protein 4

Calculated MW:

223 aa, 25 kDa

Purification Method:

Protein A purification

CloneNo.:

240793E8

Excitation/Emission maxima wavelengths:

450-500 nm / 778 nm

Applications

Tested Applications:

FC

Species Specificity:

human

Positive Controls:

FC : PHA treated human PBMCs,

Background Information

CTLA-4, also known as CD152, belonging to the immunoglobulin superfamily, is primarily found on activated T cells and regulatory T cells (Tregs). CTLA-4 is closely related to the T-cell costimulatory CD28, and both molecules bind to B7-1 and B7-2 on antigen-presenting cells. CTLA-4 acts as a negative regulatory molecule of T-cell responses.

Storage

Storage:

Store at 2-8°C. Avoid exposure to light. Stable for one year after shipment.

Storage Buffer:

PBS with 0.09% sodium azide and 0.5% BSA, pH7.3

For technical support and original validation data for this product please contact:

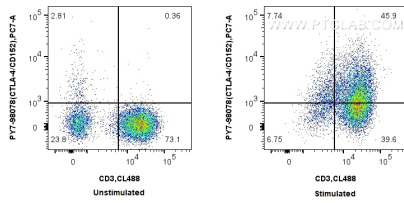
T: 4006900926

E: Proteintech-CN@ptglab.com

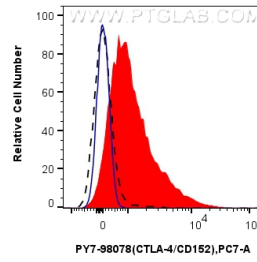
W: ptgcn.com

This product is exclusively available under Proteintech Group brand and is not available to purchase from any other manufacturer.

Selected Validation Data



1x10⁶ untreated or PHA-treated human PBMCs were surface stained with CoraLite® Plus 488 Anti-Human CD3 and 5 ul PE-Cyanine7 Anti-Human CTLA-4/CD152 Rabbit RecAb (PY7-98078, Clone: 240793E8). Cells were not fixed.



1x10⁶ PHA-treated human PBMCs were surface stained with 5 ul PE-Cyanine7 Anti-Human CTLA-4/CD152 Rabbit RecAb (PY7-98078, Clone: 240793E8) (red) or unstained (blue). 1x10⁶ untreated human PBMCs were surface stained with 5 ul PE-Cyanine7 Anti-Human CTLA-4/CD152 Rabbit RecAb (PY7-98078, Clone: 240793E8) (black, dashed). Cells were not fixed.