

产品介绍

Exosome Essentials Antibody为鉴定和研究外泌体提供了一种经济有效的工具。对于开始新项目的研究人员、筛选多个潜在目标的研究人员或那些仅仅需要较少体积抗体的研究人员来说是非常适合的。

产品成分

Exosome Expanded Antibody Kit 包含研究外泌体的10个关键靶标 (其中包括阴性对照GM130)。

Antigen	Catalog No.	Host, clonality	Tested Reactivity	Applications	Volume
CD63	<a href="#">25682-1-AP</a>	Rabbit Polyclonal	H	WB, IP, IF, IHC	20 uL
Alix	<a href="#">12422-1-AP</a>	Rabbit Polyclonal	H, M, R	WB, IP, IF, IHC	20 uL
TSG101	<a href="#">67381-1-Ig</a>	Mouse monoclonal	H, M, R	WB, IF, IHC	20 uL
HSP70	<a href="#">10995-1-AP</a>	Rabbit Polyclonal	H, M, R	WB, IP, IF, IHC	20 uL
GOLGA2/GM130	<a href="#">66662-1-Ig</a>	Mouse monoclonal	H, R	WB, IF	20 uL
Annexin V	<a href="#">66245-1-Ig</a>	Mouse monoclonal	H, M	WB, IF, IHC	20 uL
EpCAM	<a href="#">66316-1-Ig</a>	Mouse monoclonal	H	WB, IF, IHC	20 uL
HSP90	<a href="#">60318-1-Ig</a>	Mouse monoclonal	H, M, R, Pg	WB, IP, IF, IHC	20 uL
CD9	<a href="#">84142-1-RR</a>	Rabbit monoclonal	H	WB, IF, IHC	20 uL
CD81	<a href="#">66866-1-Ig</a>	Mouse monoclonal	H	WB, IF, IHC	20 uL

如果此试剂盒中的抗体不满足您的需求，请参考我们的“[Exosome Essentials Antibody Kit](#)”。

包装规格

10× 20 uL

保存条件

-20℃保存。自收到之日起一年内保持稳定。

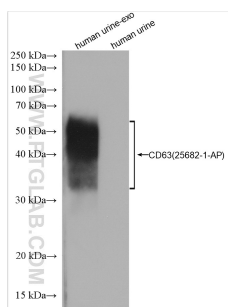
背景介绍

外泌体是一种小型的膜结合囊泡，由各种类型的细胞在正常和病理生理条件下分泌，包括癌症、神经退行性疾病和心血管疾病等。它们参与细胞间通讯，负责转移生物活性分子，如核酸、蛋白质和脂质。除了分析分离的外泌体中的物质外，科学家还一直在利用外泌体在药物递送和再生医学方面的潜力。

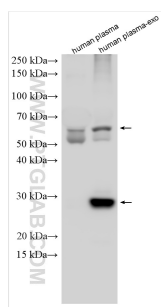
标准实验流程

点击[此处](#)查看我们用于各种应用的标准流程，包括WB、IP、IHC、IF、FC和ELISA。

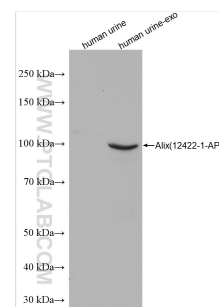
## Validation Data



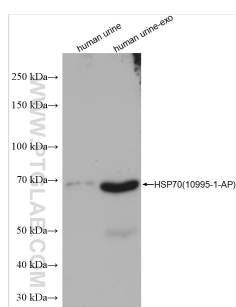
Human urine and human urine-derived exosomes (human urine-exo) were subjected to SDS PAGE followed by western blot with 25682-1-AP (CD63 antibody) at dilution of 1:1000 incubated at room temperature for 1.5 hours.



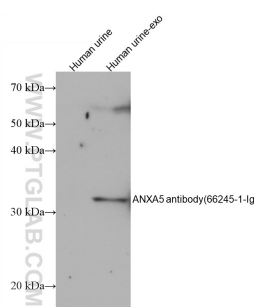
Human plasma and human plasma-derived exosomes (human plasma-exo) were subjected to SDS PAGE followed by western blot with 25682-1-AP (CD63 antibody) at dilution of 1:1000 incubated at room temperature for 1.5 hours.



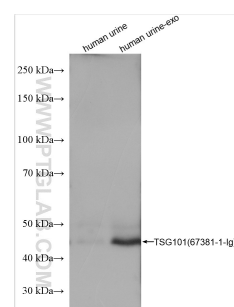
Human urine and human urine-derived exosomes (human urine-exo) were subjected to SDS PAGE followed by western blot with 12422-1-AP (Alix antibody) at dilution of 1:10000 incubated at room temperature for 1.5 hours.



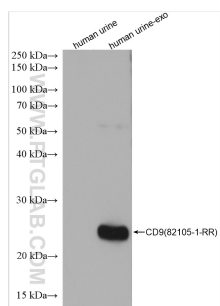
Human urine and human urine-derived exosomes (human urine-exo) were subjected to SDS PAGE followed by western blot with 10995-1-AP (HSP70 antibody) at dilution of 1:10000 incubated at room temperature for 1.5 hours.



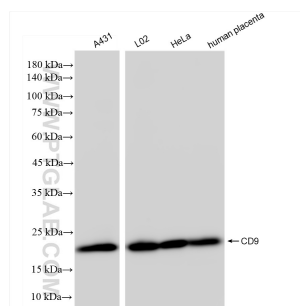
human urine exosomes tissue were subjected to SDS PAGE followed by western blot with 25682-1-AP (CD63 antibody) at dilution of 1:1000 incubated at room temperature for 1.5 hours.



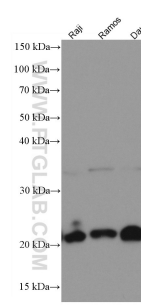
Human urine and human urine-derived exosomes (human urine-exo) were subjected to SDS PAGE followed by western blot with 67381-1-Ig (TSG101 antibody) at dilution of 1:5000 incubated at room temperature for 1.5 hours.



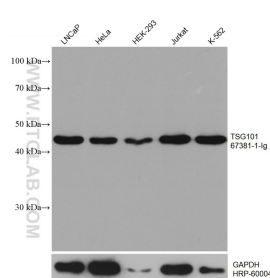
Human urine and human urine-derived exosomes (human urine-exo) were subjected to SDS PAGE followed by western blot with 82105-1-RR (CD9 antibody) at dilution of 1:5000 incubated at room temperature for 1.5 hours.



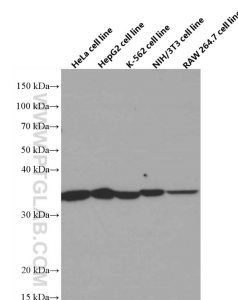
Various lysates were subjected to SDS PAGE followed by western blot with 84142-1-RR (CD9 antibody) at dilution of 1:10000 incubated at room temperature for 1.5 hours.



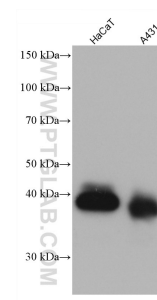
Various lysates were subjected to SDS PAGE followed by western blot with 66866-1-Ig (CD81 antibody) at dilution of 1:3000 incubated at room temperature for 1.5 hours.



Various lysates were subjected to SDS PAGE followed by western blot with 67381-1-Ig (TSG101 antibody) at dilution of 1:20000 incubated at room temperature for 1.5 hours. The membrane was stripped and reblotted with HRP-conjugated GAPDH Monoclonal antibody (HRP-60004) as loading



Various cells were subjected to SDS PAGE followed by western blot with 66245-1-Ig (Annexin V antibody) at dilution of 1:13000 incubated at room temperature for 1.5 hours.



Various lysates were subjected to SDS PAGE followed by western blot with 66316-1-Ig (EPCAM antibody) at dilution of 1:5000 incubated at room temperature for 1.5 hours.

**For technical support and original validation data for this product please contact**

T: 027-87531629

E: Proteintech-CN@ptglab.com

W: ptgcn.com

**This product is exclusively available under Proteintech Group brand and is not available to purchase from any other manufacturer.**