

产品介绍

OXPHOS（氧化磷酸化）通过线粒体呼吸链将电子传输到分子氧，这涉及四种蛋白复合物。复合物 I、II、III 和 IV（CI、CII、CIII 和 CIV）和两个移动电子载体：辅酶 Q (CoQ) 和细胞色素 c。呼吸链产生跨膜质子梯度，由复合物 V（也称为 ATP 合酶，CV）引导以合成 ATP。

此 OXPHOS 试剂盒一管包含五种多克隆抗体，适用于对来自人的线粒体蛋白样本中 5 种 OXPHOS 复合物的相对水平进行蛋白质印迹分析。此试剂盒抗体为五种抗体混合而成。需要检测单独蛋白可按相应货号购置。

产品成分

	Cat.No	Name	Complex	MW	Size
Antibodies	14676-1-AP	ATP5A1	Complexes V	50-55 kDa	100ul
	21705-1-AP	UQCRC1	Complexes III	45 kDa	
	10620-1-AP	SDHB	Complexes II	32 kDa	
	55070-1-AP	MTCO2	Complexes IV	23-25 kDa	
	14794-1-AP	NDUFB8	Complexes I	19-22 kDa	

包装规格

100ul

保存条件

-20℃ 保存。自收到之日起一年内保持稳定。

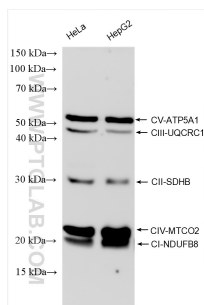
使用方法

[Western Blot Protocol](#)

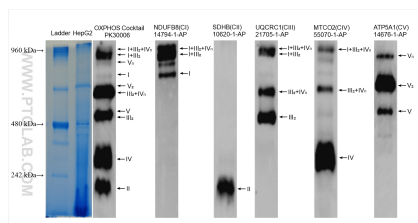
推荐稀释比

APPLICATION	DILUTION
Western Blot (WB)	WB : 1:1000-1:8000

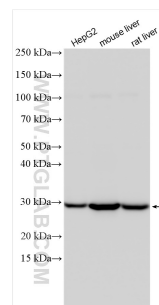
Validation Data



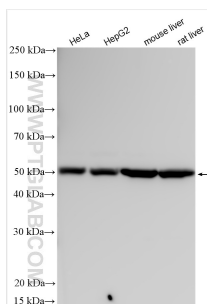
Various lysates were subjected to SDS PAGE followed by western blot with PK30006 (OXPHOS Cocktail (Human recommended)) at dilution of 1:4000 incubated at room temperature for 1 hours.
We recommend using 12% separating gel or 8%-18% gradient gel.



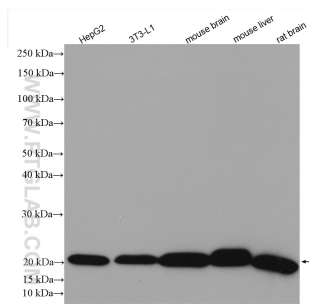
Blue Native PAGE showing oxidative phosphorylation (OXPHOS) complexes and super complexes in mitochondria. HepG2 cell lysates were subjected to BN PAGE followed by western blot with PK30006 (OXPHOS Cocktail (Human recommended)) at dilution of 1:5000 and antibodies to each complex incubated at room... temperature for 1.5 hours.



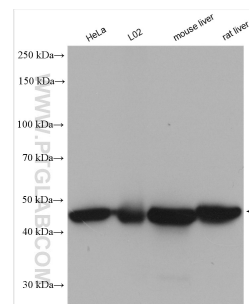
Various lysates were subjected to SDS PAGE followed by western blot with 10620-1-AP (SDHB antibody) at dilution of 1:16000 incubated at room temperature for 1.5 hours.



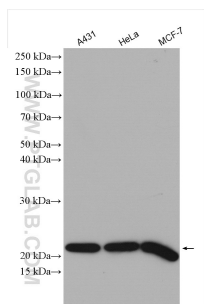
Various lysates were subjected to SDS PAGE followed by western blot with 14676-1-AP (ATP5A1 antibody) at dilution of 1:20000 incubated at room temperature for 1.5 hours.



Various lysates were subjected to SDS PAGE followed by western blot with 14794-1-AP (NDUF8 antibody) at dilution of 1:10000 incubated at room temperature for 1.5 hours.



Various lysates were subjected to SDS PAGE followed by western blot with 21705-1-AP (UQCRC1 antibody) at dilution of 1:4000 incubated at room temperature for 1.5 hours.



Various lysates were subjected to SDS PAGE followed by western blot with 55070-1-AP (MTCO2 antibody) at dilution of 1:6000 incubated at room temperature for 1.5 hours.

For technical support and original validation data for this product please contact

T: 027-87531629

E: Proteintech-CN@ptglab.com

W: ptgcn.com

This product is exclusively available under Proteintech Group brand and is not available to purchase from any other manufacturer.