

产品介绍

Autophagy Essentials Antibody Kit 为研究参与自噬途径的关键蛋白提供了一个经济高效的工具。对于开始新项目的研究人员、筛选多个潜在目标的研究人员或那些仅仅需要较少体积抗体的研究人员来说是非常适合的。

产品成分

Autophagy Essentials Antibody Kit 包含在自噬途径中发挥关键作用的5个关键蛋白靶点的抗体。

Antigen	Catalog No.	Host, clonality	Tested Reactivity	Applications	Volume
Beclin 1	66665-1-Ig	Mouse monoclonal	H, M, R	WB, IHC, IF, ELISA	20 uL
LC3	81004-1-RR	Rabbit monoclonal	H, M, R, Pg	WB, IHC, IF, ELISA	20 uL
p62	80294-1-RR	Rabbit monoclonal	H	WB, IP, IHC, IF, ELISA	20 uL
ATG5	81803-1-RR	Rabbit monoclonal	H, M, R	WB, IP, IHC, ELISA	20 uL
LAMP1	21997-1-AP	Rabbit polyclonal	H	WB, IP, IHC, ELISA	20 uL

包装规格

5 × 20 uL

保存条件

-20°C 保存。自收到之日起一年内保持稳定。

背景介绍

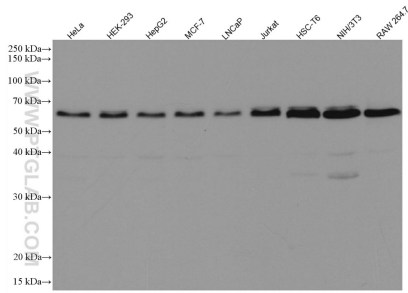
自噬是一个高度动态的过程，由以下三个步骤组成：（1）自噬体形成；（2）自噬体-溶酶体融合；（3）降解。它可以被多种与各种触发因素相关的信号通路诱导，包括营养缺乏、生长因子信号传导和细胞应激。自噬体的形成过程通过起始、成核、延伸、闭合和最终融合的步骤进行，每一个步骤都受到各种ATG蛋白的调节。

检测自噬的理想方式是评估自噬流，自噬流代表自噬途径的降解速率。检测自噬流最广泛使用的方法是检测自噬体膜蛋白LC3的加工。除了测量LC3-II变化以准确评估自噬流外，通常还建议分析自噬底物，如p62/SQSTM1。自噬体与溶酶体的融合可以通过同时分析自噬体标记物LC3和溶酶体标记物LAMP来监测。

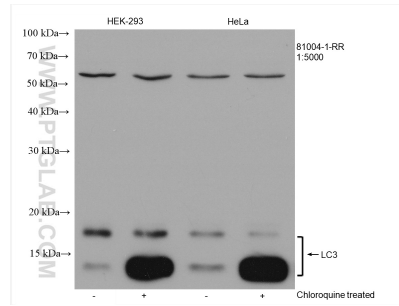
标准实验流程

点击[此处](#)查看我们用于各种应用的标准流程，包括WB、IP、IHC、IF、FC和ELISA。

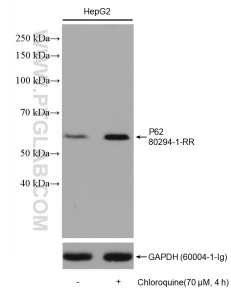
Validation Data



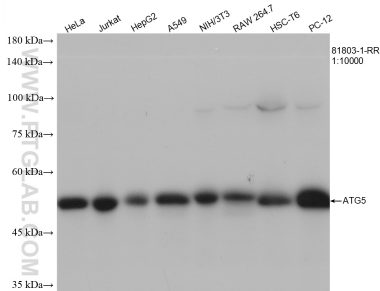
Various lysates were subjected to SDS PAGE followed by western blot with 66665-1-Ig (Beclin 1 antibody) at dilution of 1:10000 incubated at room temperature for 1.5 hours.



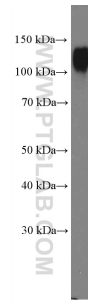
Untreated and chloroquine treated HEK-293 cells, untreated and chloroquine treated HeLa cells were subjected to SDS PAGE followed by western blot with 81004-1-RR (LC3 antibody) at dilution of 1:5000 incubated at room temperature for 1.5 hours.



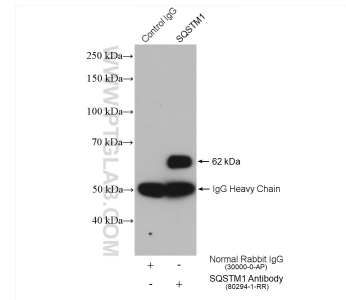
Lysates of HepG2 cells treated with Chloroquine or not were subjected to SDS PAGE followed by western blot with 80294-1-RR (P62, SQSTM1 antibody) at dilution of 1:5000 incubated at room temperature for 1.5 hours.



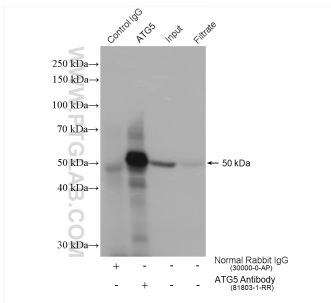
Various lysates were subjected to SDS PAGE followed by western blot with 81803-1-RR (ATG5 antibody) at dilution of 1:10000 incubated at room temperature for 1.5 hours.



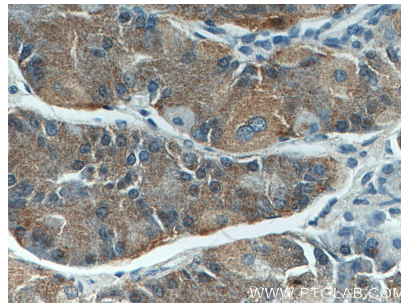
U-937 cells were subjected to SDS PAGE followed by western blot with 21997-1-AP (LAMP1 antibody) at dilution of 1:2000 incubated at room temperature for 1.5 hours.



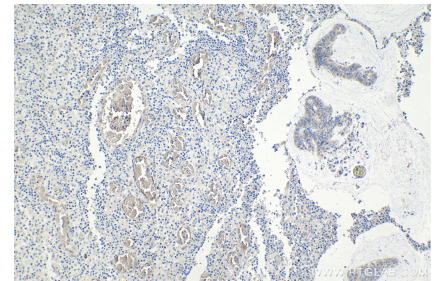
IP result of anti-P62, SQSTM1 (IP: 80294-1-RR, 4ug; Detection: 80294-1-RR 1:500) with HEK-293 cells lysate 1640 ug.



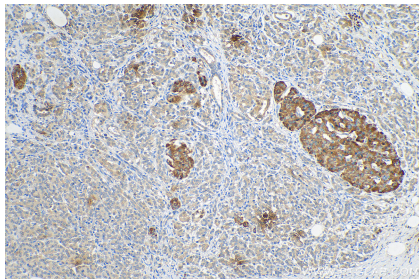
IP result of anti-ATG5 (IP: 81803-1-RR, 4ug; Detection: 81803-1-RR 1:2000) with HeLa cells lysate 1800 ug.



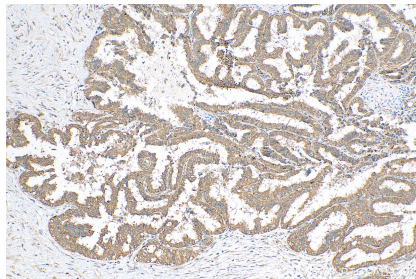
Immunohistochemical analysis of paraffin-embedded human stomach tissue slide using 66665-1-Ig (Beclin 1 antibody) at dilution of 1:500 (under 10x lens).



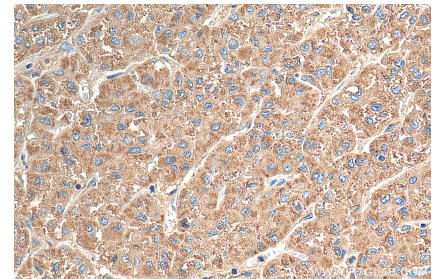
Immunohistochemical analysis of paraffin-embedded human colon cancer tissue slide using 81004-1-RR (LC3 antibody) at dilution of 1:500 (under 10x lens). Heat mediated antigen retrieval with Tris-EDTA buffer (pH 9.0).



Immunohistochemical analysis of paraffin-embedded human pancreas cancer tissue slide using 80294-1-RR (P62, SQSTM1 antibody) at dilution of 1:200 (under 10x lens). Heat mediated antigen retrieval with Tris-EDTA buffer (pH 9.0).



Immunohistochemical analysis of paraffin-embedded human ovary tumor tissue slide using 81803-1-RR (ATG5 antibody) at dilution of 1:1000 (under 10x lens). Heat mediated antigen retrieval with Tris-EDTA buffer (pH 9.0).



Immunohistochemical analysis of paraffin-embedded human liver cancer tissue slide using 21997-1-AP (LAMP1 antibody) at dilution of 1:200 (under 40x lens). Heat mediated antigen retrieval with Tris-EDTA buffer (pH 9.0).

For technical support and original validation data for this product please contact

T: 027-87531629

E: Proteintech-CN@ptglab.com

W: ptgcn.com

This product is exclusively available under Proteintech Group brand and is not available to purchase from any other manufacturer.