

For Research Use Only

# FcZero-rAb® PE Anti-Human EPCR/CD201 Rabbit Recombinant Antibody

Catalog Number: PE-FcA98325



## Basic Information

<b>Catalog Number:</b> PE-FcA98325	<b>GenBank Accession Number:</b> BC014451	<b>Purification Method:</b> Protein A purification
<b>Concentration:</b> 100tests, 5 ul/test	<b>GeneID (NCBI):</b> 10544	<b>CloneNo.:</b> 241806D7
<b>Source:</b> Rabbit	<b>UNIPROT ID:</b> Q9UNN8	<b>Recommended Dilutions:</b> FC: 5 ul per 10 <sup>6</sup> cells in a 100 µl suspension
<b>Isotype:</b> IgG	<b>Full Name:</b> protein C receptor, endothelial (EPCR)	<b>Excitation/Emission maxima wavelengths:</b> 496 nm, 565 nm / 578 nm
<b>Immunogen Catalog Number:</b> EG2339	<b>Calculated MW:</b> 238 aa, 27 kDa	

## Applications

<b>Tested Applications:</b> FC	<b>Positive Controls:</b> FC : HUVEC cells,
<b>Species Specificity:</b> human	

## Background Information

EPCR (endothelial cell protein C receptor), also known as CD201, is a type 1 transmembrane protein that is primarily found on endothelial cells. It exhibits sequence and three-dimensional structural homology with the major histocompatibility class 1/CD1 family of proteins, particularly CD1d. It binds activated protein C and enhances protein C activation by the thrombin-thrombomodulin complex. It plays a role in the protein C pathway controlling blood coagulation.

## Storage

**Storage:**  
Store at 2-8°C. Avoid exposure to light. Stable for one year after shipment.  
**Storage Buffer:**  
PBS with 0.09% sodium azide and 0.5% BSA, pH7.3

For technical support and original validation data for this product please contact:

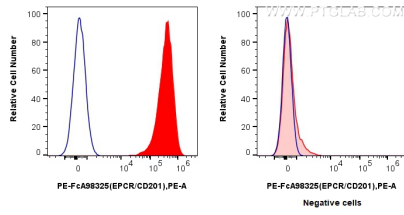
T: 4006900926

E: [Proteintech-CN@ptglab.com](mailto:Proteintech-CN@ptglab.com)

W: [ptgcn.com](http://ptgcn.com)

This product is exclusively available under Proteintech Group brand and is not available to purchase from any other manufacturer.

## Selected Validation Data



1x10<sup>6</sup> HUVEC cells (left) or Jurkat cells (right) were surface stained with 5 ul PE Anti-Human EPCR/CD201 Rabbit RecAb (PE-FcA98325, Clone: 241806D7) (red) or PE Rabbit IgG Isotype Control RecAb (PE-FcA98136, Clone: 240953C9) (blue). Cells were not fixed.