

For Research Use Only

FcZero-rAb™ PE Anti-Human Siglec-8 Rabbit Recombinant Antibody

Catalog Number: PE-FcA98177



Basic Information

Catalog Number: PE-FcA98177	GenBank Accession Number: BC053319	Purification Method: Protein A purification
Concentration: 100tests, 5 ul/test	GeneID (NCBI): 27181	CloneNo.: 241275A5
Source: Rabbit	Full Name: sialic acid binding Ig-like lectin 8	Excitation/Emission maxima wavelengths: 496 nm, 565 nm / 578 nm
Isotype: IgG	Calculated MW: 499 aa, 54 kDa	

Applications

Tested Applications:
FC

Species Specificity:
human

Background Information

Sialic acid-binding Ig-like lectin 8 (Siglec-8), also known as SAF2, is a sialic acid-binding immunoglobulin-like lectin that belongs to the SIGLEC family of the Ig superfamily (PMID: 10856141). Siglec-8 is a single-pass transmembrane protein containing three extracellular immunoglobulin-like domains, a transmembrane region, and a cytoplasmic tail (PMID: 10625619). It is an inhibitory receptor selectively expressed on human mast cells and eosinophils, and at low levels on basophils (PMID: 10856141; 33374255). Engagement of Siglec-8 with antibody results in inhibiting IgE-mediated mast cell responses and reducing allergic inflammation (PMID: 32814824).

Storage

Storage:
Store at 2-8°C. Avoid exposure to light. Stable for one year after shipment.

Storage Buffer:
PBS with 0.09% sodium azide and 0.5% BSA, pH7.3

For technical support and original validation data for this product please contact:

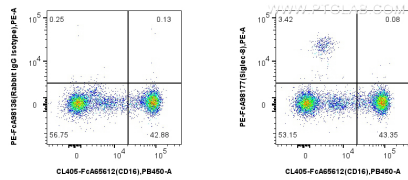
T: 4006900926

E: Proteintech-CN@ptglab.com

W: ptgcn.com

This product is exclusively available under Proteintech Group brand and is not available to purchase from any other manufacturer.

Selected Validation Data



1×10^6 human peripheral blood leukocytes were surface stained with CoraLite® Plus 405 Anti-Human CD16, and 5 μ l PE Anti-Human Siglec-8 Rabbit RecAb (PE-FcA98177, Clone: 241275A5) or PE Rabbit IgG Isotype Control RecAb (PE-FcA98136, Clone: 240953C9). Cells were not fixed.