

FcZero-rAb™ PE Anti-Human CD324 (E-cadherin) Rabbit Recombinant Antibody

Catalog Number: PE-FcA98123

Basic Information

Catalog Number:

PE-FcA98123

Concentration:

100 tests, 5 µl/test

Source:

Rabbit

Isotype:

IgG

GenBank Accession Number:

NM_004360.5

GeneID (NCBI):

999

Full Name:

cadherin 1, type 1, E-cadherin (epithelial)

Calculated MW:

97 kDa

Purification Method:

Protein A purification

CloneNo.:

241098F7

Excitation/Emission maxima wavelengths:

496 nm, 565 nm / 578 nm

Applications

Tested Applications:

FC

Species Specificity:

human

Background Information

Cadherins are a family of transmembrane glycoproteins that mediate calcium-dependent cell-cell adhesion and play an important role in the maintenance of normal tissue architecture. E-cadherin (epithelial cadherin), also known as CD324, CDH1 (cadherin 1) or CAM 120/80, is a classical member of the cadherin superfamily which also include N-, P-, R-, and B-cadherins. E-cadherin is expressed on the cell surface in most epithelial tissues. The extracellular region of E-cadherin establishes calcium-dependent homophilic trans binding, providing specific interaction with adjacent cells, while the cytoplasmic domain is connected to the actin cytoskeleton through the interaction with p120-, α -, β -, and γ -catenin (plakoglobin). E-cadherin is important in the maintenance of the epithelial integrity, and is involved in mechanisms regulating proliferation, differentiation, and survival of epithelial cell. E-cadherin may also play a role in tumorigenesis. It is considered to be an invasion suppressor protein and its loss is an indicator of high tumor aggressiveness.

Storage

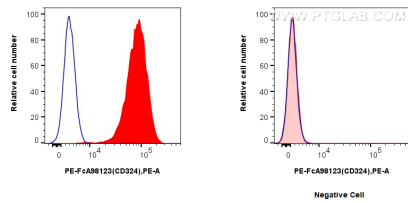
Storage:

Store at 2-8°C. Avoid exposure to light. Stable for one year after shipment.

Storage Buffer:

PBS with 0.09% sodium azide and 0.5% BSA.

Selected Validation Data



1x10⁶ HT-29 cells (left) or Jurkat cells (right) were surface stained with 5 ul PE Anti-Human CD324 (E-cadherin) Rabbit RecAb (PE-FcA98123, Clone: 241098F7) (red) or 5 ul PE Rabbit IgG Isotype Control RecAb (PE-FcA98136, Clone: 240953C9) (blue). Cells were not fixed.