

For Research Use Only

FcZero-rAb™ PE Anti-Mouse CD45 Rabbit Recombinant Antibody

Catalog Number: PE-FcA98035



Basic Information

Catalog Number:

PE-FcA98035

Concentration:

100ug, 200 ug/ml

Source:

Rabbit

Isotype:

IgG

Immunogen Catalog Number:

EG0845

GenBank Accession Number:

NM_001111316.2

GeneID (NCBI):

19264

Full Name:

protein tyrosine phosphatase,
receptor type, C

Calculated MW:

145 kDa

Purification Method:

Protein A purification

CloneNo.:

240356D1

Excitation/Emission maxima
wavelengths:

496 nm, 565 nm / 578 nm

Applications

Tested Applications:

FC

Species Specificity:

mouse

Background Information

CD45, also known as protein tyrosine phosphatase, receptor type C, is a type I transmembrane protein expressed on the surface of all haematopoietic cells with the exception of erythrocytes and platelets (PMID: 3489673; 28615666). CD45 is a pan-haematopoietic cell marker and has been shown to be essential for T- and B-cell activation and signalling (PMID: 9429890; 16378097).

Storage

Storage:

Store at 2-8°C. Avoid exposure to light. Stable for one year after shipment.

Storage Buffer:

PBS with 0.09% sodium azide and 0.5% BSA, pH7.3

For technical support and original validation data for this product please contact:

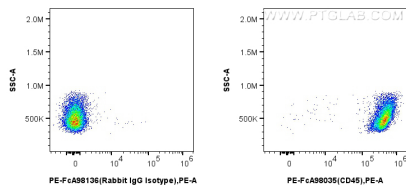
T: 4006900926

E: Proteintech-CN@ptglab.com

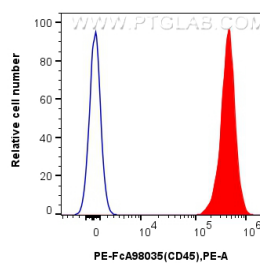
W: ptgcn.com

This product is exclusively available under Proteintech Group brand and is not available to purchase from any other manufacturer.

Selected Validation Data



1x10⁶ mouse splenocytes were surface stained with 0.25 ug PE Anti-Mouse CD45 Rabbit Recombinant Antibody (PE-FcA98035, Clone: 240356D1), or 0.25 ug PE Rabbit IgG Isotype Control Recombinant Antibody (PE-FcA98136, Clone: 240953C9). Cells were not fixed.



1x10⁶ mouse splenocytes were surface stained with 0.25 ug PE Anti-Mouse CD45 Rabbit Recombinant Antibody (PE-FcA98035, Clone: 240356D1)(red), or 0.25 ug PE Rabbit IgG Isotype Control Recombinant Antibody (PE-FcA98136, Clone: 240953C9) (blue). Cells were not fixed.