

For Research Use Only

FcZero-rAb™ PE Anti-Human CD85j / LILRB1 (GHI/75) Rabbit IgG Recombinant Antibody

Catalog Number: PE-FcA65623



Basic Information

Catalog Number:

PE-FcA65623

Concentration:

100tests, 5 ul/test

Source:

Rabbit

Isotype:

IgG

GenBank Accession Number:

BC015731

GeneID (NCBI):

10859

Full Name:

leukocyte immunoglobulin-like
receptor, subfamily B (with TM and
ITIM domains), member 1

Calculated MW:

71 kDa

Purification Method:

Protein A purification

CloneNo.:

GHI/75

Recommended Dilutions:

FC: 5 ul per 10⁶ cells in 100 μ l
suspension

Excitation/Emission maxima
wavelengths:

496 nm, 565 nm / 578 nm

Applications

Tested Applications:

FC

Species Specificity:

human

Positive Controls:

FC : human PBMCs,

Background Information

LILRB1, also named as CD85j or ILT2, includes four C2 Ig domains binding HLA class I molecules in the extracellular region and a cytoplasmic domain containing four immunoreceptor tyrosine-based inhibition motifs (ITIM). LILRB1 is a surface glycoprotein detected on the surface of B cells, monocytes, dendritic cells, T cells and NK cells.

Storage

Storage:

Store at 2-8°C. Avoid exposure to light. Stable for one year after shipment.

Storage Buffer:

PBS with 0.09% sodium azide and 0.5% BSA, pH7.3

For technical support and original validation data for this product please contact:

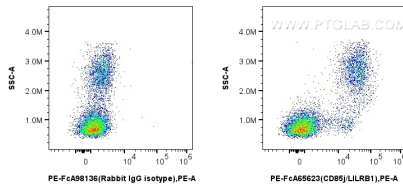
T: 4006900926

E: Proteintech-CN@ptglab.com

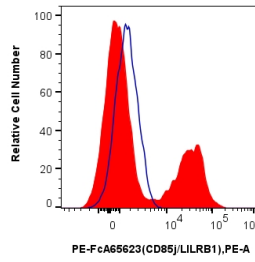
W: ptgcn.com

This product is exclusively available under Proteintech Group brand and is not available to purchase from any other manufacturer.

Selected Validation Data



1x10⁶ human PBMCs were surface stained with 5 ul PE Anti-Human CD85j / LILRB1 (GHI/75) Rabbit IgG Recombinant Antibody (PE-FcA65623, Clone: GHI/75), or PE Rabbit IgG Isotype Control Recombinant Antibody (PE-FcA98136, Clone: 240953C9). Cells were not fixed.



1x10⁶ human PBMCs were surface stained with 5 ul PE Anti-Human CD85j / LILRB1 (GHI/75) Rabbit IgG Recombinant Antibody (PE-FcA65623, Clone: GHI/75) (red), or PE Rabbit IgG Isotype Control Recombinant Antibody (PE-FcA98136, Clone: 240953C9) (blue). Cells were not fixed.