

For Research Use Only

PE Mouse IgG2b, κ Isotype Control Recombinant Antibody

Catalog Number: PE-98740



Basic Information

Catalog Number:

PE-98740

Concentration:

100ug, 200 ug/ml

Source:

Mouse

Isotype:

IgG2b

GenBank Accession Number:

GeneID (NCBI):

Full Name:

Purification Method:

Protein A purification

CloneNo.:

253506A1

Recommended Dilutions:

FC: 0.1 ug per 10^6 cells in a 100 μ l suspension

Excitation/Emission maxima wavelengths:

496 nm, 565 nm / 578 nm

Applications

Tested Applications:

FC

Species Specificity:

n/a

Positive Controls:

FC : human PBMCs, rat splenocytes, THP-1 cells

Background Information

This product is an isotype control antibody, which is used to estimate the non-specific binding of target primary antibodies due to Fc receptor binding or other protein-protein interactions. An isotype control antibody should have the same immunoglobulin type and be used at the same concentration as the test antibody.

Storage

Storage:

Store at 2-8°C. Avoid exposure to light. Stable for one year after shipment.

Storage Buffer:

PBS with 0.09% sodium azide and 0.5% BSA, pH7.3

For technical support and original validation data for this product please contact:

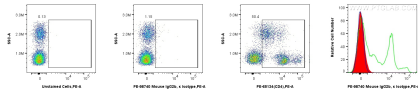
T: 4006900926

E: Proteintech-CN@ptglab.com

W: ptgcn.com

This product is exclusively available under Proteintech Group brand and is not available to purchase from any other manufacturer.

Selected Validation Data



1x10⁶ human PBMCs were unstained (blue in histogram), or surface stained with 0.1 ug PE Mouse IgG2b, κ Isotype Control RecAb (PE-98740, Clone: 253506A1) (red) or 0.1 ug PE Anti-Human CD4 (OKT4) (PE-65134, Clone: OKT4) (green in histogram). Cells were incubated with FC Receptor Block prior to staining. Cells were not fixed.