

For Research Use Only

PE Anti-Mouse CCL1 Rabbit Recombinant Antibody

Catalog Number: PE-98502-2



Basic Information

Catalog Number: PE-98502-2	GenBank Accession Number: NM_011329.3	Purification Method: Protein A purification
Concentration: 100ug, 200 ug/ml	GeneID (NCBI): 20290	CloneNo.: 250094D6
Source: Rabbit	UNIPROT ID: P10146-1	Recommended Dilutions: FC (Intra): 0.1 ug per 10 ⁶ cells in a 100 µl suspension
Isotype: IgG	Full Name: chemokine (C-C motif) ligand 1	Excitation/Emission maxima wavelengths: 496 nm, 565 nm / 578 nm
Immunogen Catalog Number: EG3293	Calculated MW: 10KD	

Applications

Tested Applications: FC (Intra)	Positive Controls: FC (Intra) : Transfected HEK-293T cells,
Species Specificity: mouse	

Background Information

CCL1, also known as I-309 in human or TCA-3 in mice, is a small glycoprotein belonging to the CC chemokine family. It is predominantly expressed by activated T cells, monocytes, and endothelial cells, and primarily acts as a chemoattractant for monocytes and T cells. CCL1 binds to the receptor CCR8, which is expressed on monocytes, neutrophils, and T cells, including within the thymus. This chemokine may perform dual functions: as an inflammatory chemokine during leukocyte migration into inflammatory sites and as a constitutive chemokine during T cell selection in the thymus. Furthermore, CCL1 has been associated with allergic inflammation and the recruitment of Th2 cells, suggesting a role in allergic diseases such as asthma.

Storage

Storage:
Store at 2-8°C. Avoid exposure to light. Stable for one year after shipment.
Storage Buffer:
PBS with 0.09% sodium azide and 0.5% BSA, pH7.3

For technical support and original validation data for this product please contact:

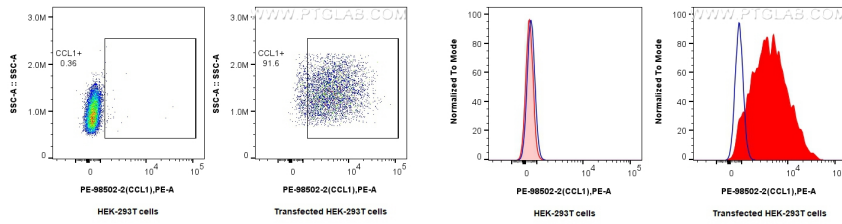
T: 4006900926

E: Proteintech-CN@ptglab.com

W: ptgcn.com

This product is exclusively available under Proteintech Group brand and is not available to purchase from any other manufacturer.

Selected Validation Data



1x10⁶ HEK-293T cells or CCL1-transfected HEK-293T cell were intracellularly stained with 0.1 ug PE Anti-Mouse CCL1 Rabbit RecAb (PE-98502-2, Clone: 250094D6). Cells were fixed and permeabilized with Intracellular Flow Cytometry Fixation & Permeabilization Buffer Kit (PF00019).

1x10⁶ HEK-293T cells or CCL1-transfected HEK-293T cells were intracellularly stained with 0.1 ug PE Anti-Mouse CCL1 Rabbit RecAb (PE-98502-2, Clone: 250094D6) (red) or PE Rabbit IgG Isotype Control Recombinant Antibody (PE-98136, Clone: 240953C9) (blue). Cells were fixed and permeabilized with Intracellular Flow Cytometry Fixation & Permeabilization Buffer Kit (PF00019).