

For Research Use Only

# PE Anti-Mouse CD8a Rabbit Recombinant Antibody

Catalog Number: PE-98472-2



## Basic Information

Catalog Number:

PE-98472-2

Concentration:

100ug, 200 ug/ml

Source:

Rabbit

Isotype:

IgG

Immunogen Catalog Number:

EG3265

GenBank Accession Number:

NM\_001081110.2

GeneID (NCBI):

12525

UNIPROT ID:

P01731

Full Name:

CD8 antigen, alpha chain

Calculated MW:

27 kDa

Purification Method:

Protein A purification

CloneNo.:

242879C10

Recommended Dilutions:

FC: 0.1 ug per 10<sup>6</sup> cells in a 100 µl suspension

Excitation/Emission maxima wavelengths:

496 nm, 565 nm / 578 nm

## Applications

Tested Applications:

FC

Species Specificity:

mouse

Positive Controls:

FC : mouse splenocytes,

## Background Information

CD8 is a transmembrane glycoprotein composed of two disulfide-linked chains. It can be present as a homodimer of CD8  $\alpha$  or as a heterodimer of CD8  $\alpha$  and CD8  $\beta$  (PMID: 3264320; 8253791). CD8 is found on most thymocytes. The majority of class I-restricted T cells express mostly the CD8  $\alpha$   $\beta$  heterodimer while CD8  $\alpha$   $\alpha$  homodimers alone have been found on some gut intraepithelial T cells, on some T cell receptor (TCR)  $\gamma$   $\delta$  T cells and on NK cells (PMID: 2111591; 1831127; 8420975). CD8 acts as a co-receptor that binds to MHC class-I and participates in cytotoxic T cell activation (PMID: 8499079). During T cell development, CD8 is required for positive selection of CD4-/CD8+ T cells (PMID: 1968084).

## Storage

Storage:

Store at 2-8°C. Avoid exposure to light. Stable for one year after shipment.

Storage Buffer:

PBS with 0.09% sodium azide and 0.5% BSA, pH7.3

For technical support and original validation data for this product please contact:

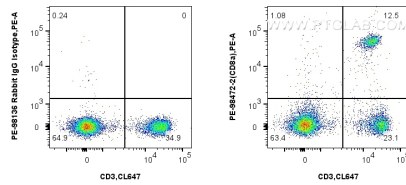
T: 4006900926

E: [Proteintech-CN@ptglab.com](mailto:Proteintech-CN@ptglab.com)

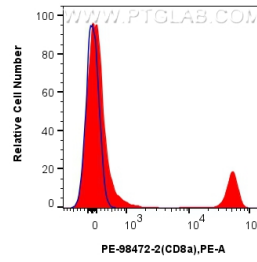
W: [ptgcn.com](http://ptgcn.com)

This product is exclusively available under Proteintech Group brand and is not available to purchase from any other manufacturer.

## Selected Validation Data



1x10<sup>6</sup> mouse splenocytes were surface stained with Coralite® Plus 647 Anti-Mouse CD3, and 0.1 ug PE Anti-Mouse CD8a Rabbit RecAb (PE-98472-2, Clone: 242879C10) or PE Rabbit IgG Isotype Control RecAb (PE-98136, Clone: 240953C9). Cells were not fixed.



1x10<sup>6</sup> mouse splenocytes were surface stained with 0.1 ug PE Anti-Mouse CD8a Rabbit RecAb (PE-98472-2, Clone: 242879C10) (red) or PE Rabbit IgG Isotype Control RecAb (PE-98136, Clone: 240953C9) (blue). Cells were not fixed.