

For Research Use Only

PE Anti-Human HLA-DR (L243) Mouse IgG2a Recombinant Antibody

Catalog Number: PE-65560



Basic Information

Catalog Number:

PE-65560

Size:

100 tests, 5 µl/test

Source:

Mouse

Isotype:

IgG2a

GenBank Accession Number:

BC032350

GeneID (NCBI):

3122

ENSEMBL Gene ID:

ENSG00000204287

UNIPROT ID:

P01903

Full Name:

major histocompatibility complex,
class II, DR alpha

Calculated MW:

254 aa, 29 kDa

Purification Method:

Protein A purification

CloneNo.:

L243

Excitation/Emission maxima
wavelengths:

496 nm, 565 nm / 578 nm

Applications

Tested Applications:

FC

Species Specificity:

Human

Background Information

Storage

Storage:

Store at 2-8°C. Avoid exposure to light. Stable for one year after shipment.

Storage Buffer:

PBS with 0.09% sodium azide and 0.5% BSA.

For technical support and original validation data for this product please contact:

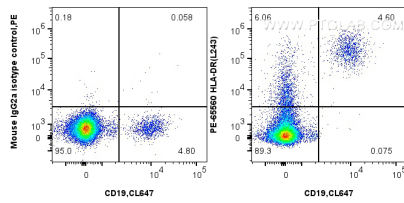
T: 4006900926

E: Proteintech-CN@ptglab.com

W: ptgcn.com

This product is exclusively available under Proteintech Group brand and is not available to purchase from any other manufacturer.

Selected Validation Data



1x10⁶ human PBMCs were surface stained with 5 ul PE HLA-DR Recombinant Antibody (PE-65560, Clone:L243) or PE Mouse IgG2a Isotype Control (C1.18.4) (PE-65208, Clone: C1.18.4), and 5 ul CoraLite® Plus 647 Anti-Human CD19 (HIB19) (CL647-65110, Clone: HIB19). Cells were not fixed.