

# PE Anti-Human ALCAM (3A6)

Catalog Number: PE-65223

## Basic Information

**Catalog Number:**

PE-65223

**Size:**

100 tests, 5 µl/test

**Source:**

Mouse

**Isotype:**

IgG1, kappa

**GenBank Accession Number:**

BC057809

**GeneID (NCBI):**

214

**UNIPROT ID:**

Q13740

**Full Name:**

activated leukocyte cell adhesion molecule

**Calculated MW:**

105 kDa

**Purification Method:**

Affinity purification

**CloneNo.:**

3A6

**Excitation/Emission maxima wavelengths:**

496 nm, 565 nm / 578 nm

## Applications

**Tested Applications:**

FC

**Species Specificity:**

Human

## Background Information

Activated leukocyte cell adhesion molecule (ALCAM, also known as CD166) is a cell adhesion molecule that belongs to the immunoglobulin superfamily. It is involved in cell-cell adhesion through homophilic and heterophilic (to CD6) interactions. ALCAM is widely expressed in a variety of normal tissues and cell types, including activated T cells and monocytes, epithelial cells, fibroblasts, neuronal cells, hepatocytes, and bone marrow mesenchymal stem cells (PMID: 7760007; 25221999). Altered ALCAM expression has been associated with the differentiation state and progression in some neoplasms including melanoma, prostate, colorectal, and breast cancers (PMID: 20461761; 18172759).

## Storage

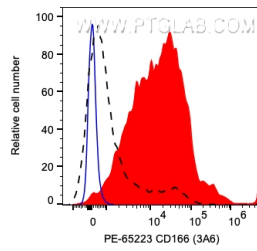
**Storage:**

Store at 2-8°C. Avoid exposure to light. Stable for one year after shipment.

**Storage Buffer:**

PBS with 0.09% sodium azide and 0.5% BSA.

## Selected Validation Data



1X10<sup>6</sup> PHA-treated human PBMCs were surface stained with 5  $\mu$ l PE Anti-Human ALCAM (PE-65223, Clone:3A6) (red) or unstained (blue). The black dashed line indicates PBMCs surface stained with 5  $\mu$ l PE Anti-Human ALCAM. Cells were not fixed. Monocytes were gated.