

For Research Use Only

# PE Anti-Human CD146 (P1H12)

Catalog Number: PE-65181

2 Publications



## Basic Information

### Catalog Number:

PE-65181

### Size:

100 tests, 5 µl/test

### Source:

Mouse

### Isotype:

IgG1, kappa

### GenBank Accession Number:

BC056418

### GeneID (NCBI):

4162

### UNIPROT ID:

P43121

### Full Name:

melanoma cell adhesion molecule

### Calculated MW:

646 aa, 72 kDa

### Purification Method:

The purified antibody is conjugated with R-phycoerythrin (PE) under optimum conditions. The conjugate is purified by size-exclusion chromatography.

### CloneNo.:

P1H12

### Excitation/Emission maxima wavelengths:

496 nm, 565 nm / 578 nm

## Applications

### Tested Applications:

FC

### Cited Applications:

FC

### Species Specificity:

human, mouse, rabbit, canine

### Cited Species:

human

## Background Information

CD146, also known as melanoma cell adhesion molecule (MCAM) or MUC18, originally identified as a biomarker of melanoma progression, is a transmembrane glycoprotein of 113-130 kDa, belonging to the immunoglobulin (Ig) superfamily (PMID: 8378324; 25993332). Structurally, it consists of five Ig domains, a transmembrane domain, and a cytoplasmic region. In normal adult tissue, CD146 is primarily expressed by vascular endothelium and smooth muscle. CD146 is a key cell adhesion protein in vascular endothelial cell activity and angiogenesis, and has been used as marker of circulating endothelium cells (CECs) (PMID: 19356677). In addition to the membrane-anchored form of CD146, a soluble form of CD146 (sCD146, 105 kDa) has also been found in human plasma and in the supernatant of cultured human endothelial cells (PMID: 9462829; 19229070; 16374253; 14597988).

## Notable Publications

Author	Pubmed ID	Journal	Application
Xun Xi	35756790	J Dent Sci	FC
Tao Jiang	37441553	J Tissue Eng	FC

## Storage

### Storage:

Store at 2-8°C. Avoid exposure to light. Stable for one year after shipment.

### Storage Buffer:

PBS with 0.09% sodium azide and 0.5% BSA.

For technical support and original validation data for this product please contact:

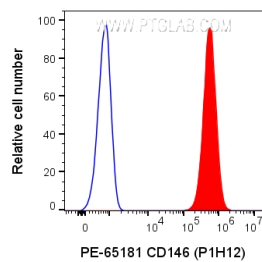
T: 4006900926

E: [Proteintech-CN@ptglab.com](mailto:Proteintech-CN@ptglab.com)

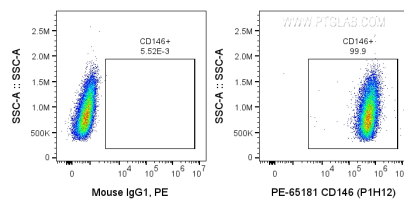
W: [ptgcn.com](http://ptgcn.com)

This product is exclusively available under Proteintech Group brand and is not available to purchase from any other manufacturer.

## Selected Validation Data



1X10<sup>6</sup> A375 cells were surface stained with 5  $\mu$ l PE Anti-Human CD146 (PE-65181, Clone: P1H12), or Mouse IgG1 Isotype Control. Cells were not fixed.



1X10<sup>6</sup> A375 cells were surface stained with 5  $\mu$ l PE Anti-Human CD146 (PE-65181, Clone: P1H12), or Mouse IgG1 Isotype Control. Cells were not fixed.