

For Research Use Only

# PE Anti-Human CD3 (SK7)

Catalog Number: PE-65148



## Basic Information

Catalog Number:

PE-65148

Size:

100 tests, 5  $\mu$  l / test

Source:

Mouse

Isotype:

IgG1, kappa

GenBank Accession Number:

BC049847

GeneID (NCBI):

916

ENSEMBL Gene ID:

ENSG00000198851

UNIPROT ID:

P07766

Full Name:

CD3e molecule, epsilon (CD3-TCR complex)

Calculated MW:

207 aa, 23 kDa

Purification Method:

Affinity purification

CloneNo.:

SK7

Excitation/Emission maxima wavelengths:

496 nm, 565 nm / 578 nm

## Applications

Tested Applications:

FC

Species Specificity:

Human

## Background Information

CD3 is a multimeric protein associated with the T-cell receptor (TCR) to form a complex involved in antigen recognition and signal transduction (PMID: 15885124). CD3 is composed of CD3  $\gamma$ ,  $\delta$ ,  $\epsilon$ , and  $\zeta$  chains (PMID: 1826255). It is expressed by thymocytes in a developmentally regulated manner, T cells, and some NK cells (PMID: 3289580). The TCR recognizes antigens bound to major histocompatibility complex (MHC) molecules. TCR-mediated peptide-MHC recognition is transmitted to the CD3 complex, leading to the intracellular signal transduction (PMID: 11985657).

## Storage

Storage:

Store at 2-8°C. Avoid exposure to light. Stable for one year after shipment.

Storage Buffer:

Phosphate based buffer with 0.09% sodium azide and 0.1% gelatin, pH 7.2.

For technical support and original validation data for this product please contact:

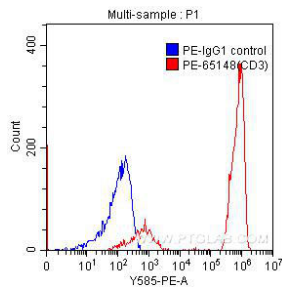
T: 4006900926

E: [Proteintech-CN@ptglab.com](mailto:Proteintech-CN@ptglab.com)

W: [ptgcn.com](http://ptgcn.com)

This product is exclusively available under Proteintech Group brand and is not available to purchase from any other manufacturer.

## Selected Validation Data



$1 \times 10^6$  human peripheral blood lymphocytes were surface stained with 0.25  $\mu$ g PE-anti-human CD3 (PE-65148, clone SK7) (red) or 0.25  $\mu$ g PE-mouse IgG1 isotype control (blue). Cells were not fixed.