

For Research Use Only

PE Anti-Human CD8 (SK1)

Catalog Number: PE-65146 **2 Publications**



Basic Information

Catalog Number:

PE-65146

Size:

100 tests, 5 µl/test

Source:

Mouse

Isotype:

IgG1, kappa

GenBank Accession Number:

BC025715

GeneID (NCBI):

925

ENSEMBL Gene ID:

ENSG00000153563

UNIPROT ID:

P01732

Full Name:

CD8a molecule

Calculated MW:

235 aa, 26 kDa

Purification Method:

Affinity purification

CloneNo.:

SK1

Excitation/Emission maxima wavelengths:

496 nm, 565 nm / 578 nm

Applications

Tested Applications:

FC

Cited Applications:

FC

Species Specificity:

Human

Background Information

CD8 is a transmembrane glycoprotein composed of two disulfide-linked chains. It can be present as a homodimer of CD8 α or as a heterodimer of CD8 α and CD8 β (PMID: 3264320; 8253791). CD8 is found on most thymocytes. The majority of class I-restricted T cells express mostly the CD8 α β heterodimer while CD8 α α homodimers alone have been found on some gut intraepithelial T cells, on some T cell receptor (TCR) γ δ T cells and on NK cells (PMID: 2111591; 1831127; 8420975). CD8 acts as a co-receptor that binds to MHC class-I and participates in cytotoxic T cell activation (PMID: 8499079). During T cell development, CD8 is required for positive selection of CD4-/CD8+ T cells (PMID: 1968084).

Notable Publications

| Author | Pubmed ID | Journal | Application |
|----------|-----------|-----------------|-------------|
| Qian Gou | 37870169 | Adv Sci (Weinh) | FC |
| Qian Gou | 37096255 | Cancer Sci | |

Storage

Storage:

Store at 2-8°C. Avoid exposure to light. Stable for one year after shipment.

Storage Buffer:

PBS with 0.09% sodium azide and 0.5% BSA.

For technical support and original validation data for this product please contact:

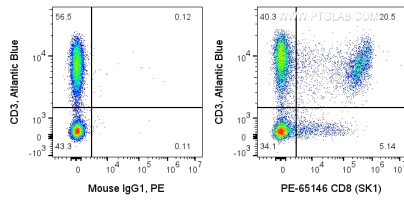
T: 4006900926

E: Proteintech-CN@ptglab.com

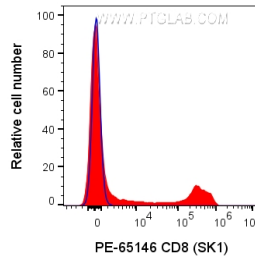
W: ptgcn.com

This product is exclusively available under Proteintech Group brand and is not available to purchase from any other manufacturer.

Selected Validation Data



1×10^6 human PBMCs were surface co-stained with Atlantic Blue™ Anti-Human CD3 and 5 ul PE Anti-Human CD8 (PE-65146, Clone:SK1), or PE Mouse IgG1 Isotype Control. Cells were not fixed. Lymphocytes were gated.



1×10^6 human PBMCs were surface stained with 5 ul PE Anti-Human CD8 (PE-65146, Clone:SK1), or PE Mouse IgG1 Isotype Control. Cells were not fixed. Lymphocytes were gated.