

For Research Use Only

PE Anti-Mouse NK1.1 (CD161) (PK136)



Catalog Number: PE-65138

Basic Information

| | | |
|------------------------------------|--|---|
| Catalog Number: PE-65138 | GenBank Accession Number: BC120707 | Purification Method: Affinity purification |
| Size: 100ug, 200 µg/ml | GeneID (NCBI): 17057 | CloneNo.: PK136 |
| Source: Mouse | UNIPROT ID: P27811 | Excitation/Emission maxima wavelengths: 496 nm, 565 nm / 578 nm |
| Isotype: IgG2a, kappa | Full Name: killer cell lectin-like receptor subfamily B member 1A | |

Applications

Tested Applications:
FC

Species Specificity:
Mouse

Background Information

NK1.1 (CD161), also known as KLRB1 or NKR-P1A, is a type II transmembrane C-type lectin-like receptor and is expressed on the cell membrane as disulfide-linked homodimer (PMID: 8077657). It is expressed by the majority of NK cells and subsets of peripheral T cells, including both CD4+ and CD8+ T cells, and is expressed preferentially on adult T cells with a "memory" antigenic phenotype (PMID: 8077657; 22566826). Expression of CD161 correlates with the cytotoxic function of CD16+ NK cells, and ligation of CD161 with its ligand LLT1 inhibits NK cell cytotoxicity and cytokine secretion (PMID: 29686665).

Storage

Storage:
Store at 2-8°C. Avoid exposure to light. Stable for one year after shipment.

Storage Buffer:
Phosphate based buffer with 0.09% sodium azide and 0.1% gelatin, pH 7.2.

For technical support and original validation data for this product please contact:

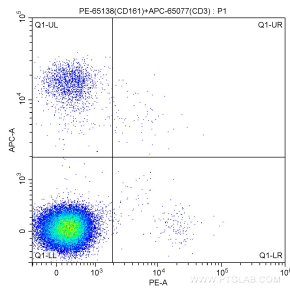
T: 4006900926

E: Proteintech-CN@ptglab.com

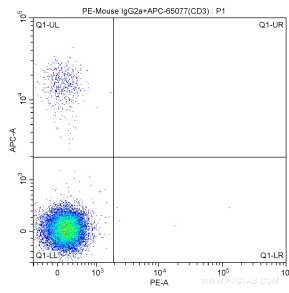
W: ptgcn.com

This product is exclusively available under Proteintech Group brand and is not available to purchase from any other manufacturer.

Selected Validation Data



1X10⁶ C57BL/6 mouse splenocytes were surface stained with APC-Anti-Mouse CD3 (APC-65077, Clone:17A2) and 1.00 ug PE-Anti-Mouse NK1.1 (CD161) (PE-65138, Clone:PK136). Cells were not fixed.



1X10⁶ C57BL/6 mouse splenocytes were surface stained with APC-Anti-Mouse CD3 (APC-65077, Clone:17A2) and PE-mouse IgG2a isotype control antibody. Cells were not fixed.