

For Research Use Only

# PE Anti-Human CD161 (HP-3G10)

Catalog Number: PE-65115



## Basic Information

Catalog Number:

PE-65115

Size:

100 tests, 5  $\mu$  l/test

Source:

Mouse

Isotype:

IgG1, kappa

GenBank Accession Number:

BC114516

GeneID (NCBI):

3820

ENSEMBL Gene ID:

ENSG00000111796

UNIPROT ID:

Q12918

Full Name:

killer cell lectin-like receptor  
subfamily B, member 1

Calculated MW:

225 aa, 25 kDa

Purification Method:

Affinity purification

CloneNo.:

HP-3G10

Excitation/Emission maxima  
wavelengths:

496 nm, 565 nm / 578 nm

## Applications

Tested Applications:

FC

Species Specificity:

Human

## Background Information

### Storage

Storage:

Store at 2-8°C. Avoid exposure to light. Stable for one year after shipment.

Storage Buffer:

Phosphate based buffer with 0.09% sodium azide and 0.1% gelatin, pH 7.2.

For technical support and original validation data for this product please contact:

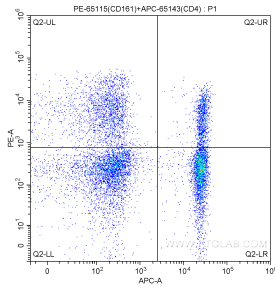
T: 4006900926

E: [Proteintech-CN@ptglab.com](mailto:Proteintech-CN@ptglab.com)

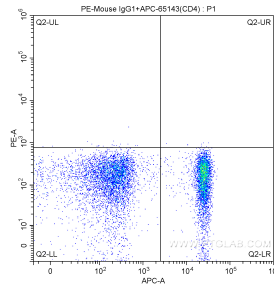
W: [ptgcn.com](http://ptgcn.com)

This product is exclusively available under Proteintech Group brand and is not available to purchase from any other manufacturer.

## Selected Validation Data



1X10<sup>6</sup> human peripheral blood lymphocytes were surface stained with 5.00 ul/test APC-Anti-Human CD4 (APC-65143, Clone:RPA-T4) and 5.00 ul/test PE-Anti-Human CD161 (PE-65115, Clone:HP-3G10). Cells were not fixed.



1X10<sup>6</sup> human peripheral blood lymphocytes were surface stained with 5.00 ul/test APC-Anti-Human CD4 (APC-65143, Clone: RPA-T4) and 0.50 ug PE-mouse IgG1 isotype control. Cells were not fixed.