

For Research Use Only

PE Anti-Mouse CD16/CD32 (2.4G2)

Catalog Number: PE-65080



Basic Information

Catalog Number:

PE-65080

Concentration:

100ug, 0.2 mg/ml

Source:

Rat

Isotype:

IgG2b, kappa

GenBank Accession Number:

BC038070

GeneID (NCBI):

14130

UNIPROT ID:

P08101

Full Name:

Fc receptor, IgG, low affinity IIb

Purification Method:

Affinity purification

CloneNo.:

2.4G2

Recommended Dilutions:

FC: 0.1 ug per 10⁶ cells in 100 µl suspension

Excitation/Emission maxima wavelengths:

496 nm, 565 nm / 578 nm

Applications

Tested Applications:

FC

Species Specificity:

mouse

Positive Controls:

FC : mouse splenocytes,

Background Information

CD16 (Fc γ RIII) is a 50-70 kDa low affinity Fc receptor found on the surface of natural killer cells, neutrophil polymorphonuclear leukocytes, monocytes and macrophages. CD16 mediates antibody-dependent cellular cytotoxicity (ADCC) and other antibody-dependent responses, such as phagocytosis. CD32 (Fc γ RII) is a 40 kD transmembrane glycoprotein that binds to the Fc region of IgG with low affinity. CD32 is present on phagocytic cells such as macrophages and neutrophils, and is involved in the process of phagocytosis and clearing of immune complexes. The 2.4G2 antibody reacts with the extracellular domains of mouse CD16 (FcRIII) and CD32 (FcRII) (PMID: 90108; 8406898).

Storage

Storage:

Store at 2-8°C. Avoid exposure to light. Stable for one year after shipment.

Storage Buffer:

PBS with 0.09% sodium azide and 0.1% gelatin, pH7.2

For technical support and original validation data for this product please contact:

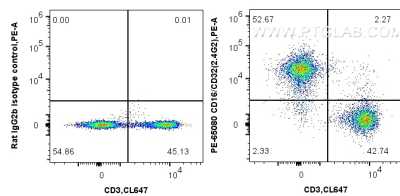
T: 4006900926

E: Proteintech-CN@ptglab.com

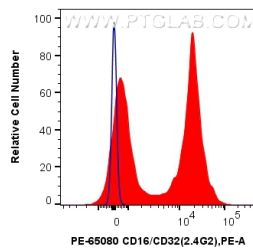
W: ptgcn.com

This product is exclusively available under Proteintech Group brand and is not available to purchase from any other manufacturer.

Selected Validation Data



1x10⁶ mouse splenocytes were surface stained with CoraLite® Plus 647 Anti-Mouse CD3, and 0.1 ug PE Anti-Mouse CD16 / CD32 (2.4G2) (PE-65080, Clone: 2.4G2) or PE Rat IgG2b Isotype Control (LTF-2) (PE-65211, Clone: LTF-2). Cells were not fixed.



1x10⁶ mouse splenocytes were surface stained with 0.1 ug PE Anti-Mouse CD16 / CD32 (2.4G2) (PE-65080, Clone: 2.4G2) (red) or PE Rat IgG2b Isotype Control (LTF-2) (PE-65211, Clone: LTF-2) (blue). Cells were not fixed.