

For Research Use Only

# PE Anti-Human NCAM1/CD56 (MEM-188)

Catalog Number: PE-65067



## Basic Information

Catalog Number:

PE-65067

Size:

100 tests, 10 ul/test

Source:

Mouse

Isotype:

IgG2a, kappa

GenBank Accession Number:

BC014205

GeneID (NCBI):

4684

ENSEMBL Gene ID:

ENSG00000149294

UNIPROT ID:

P13591

Full Name:

neural cell adhesion molecule 1

Purification Method:

Affinity purification

CloneNo.:

MEM-188

Excitation/Emission maxima wavelengths:

496 nm, 565 nm / 578 nm

## Applications

Tested Applications:

FC

Species Specificity:

human

## Background Information

Neural cell adhesion molecule 1 (NCAM1, also known as CD56) is a cell adhesion glycoprotein of the immunoglobulin (Ig) superfamily. It is a multifunction protein involved in synaptic plasticity, neurodevelopment, and neurogenesis. NCAM1 is expressed on human neurons, glial cells, skeletal muscle cells, NK cells and a subset of T cells, and the expression is observed in a wide variety of human tumors, including myeloma, myeloid leukemia, neuroendocrine tumors, Wilms' tumor, neuroblastoma, and NK/T cell lymphomas.

## Storage

Storage:

Store at 2-8°C. Avoid exposure to light. Stable for one year after shipment.

Storage Buffer:

PBS with 0.1% sodium azide and a stabilizer.

For technical support and original validation data for this product please contact:

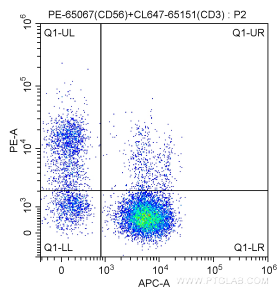
T: 4006900926

E: [Proteintech-CN@ptglab.com](mailto:Proteintech-CN@ptglab.com)

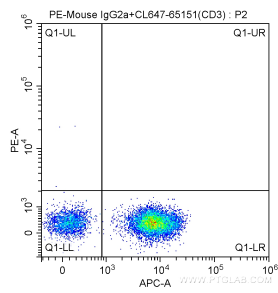
W: [ptgcn.com](http://ptgcn.com)

This product is exclusively available under Proteintech Group brand and is not available to purchase from any other manufacturer.

## Selected Validation Data



1X10<sup>6</sup> human peripheral blood lymphocytes were surface stained with CoraLite® Plus 647-conjugated Anti-Human CD3 (CL647-65151, Clone:UCHT1) and 0.2 ug PE Anti-Human CD56 (PE-65067, Clone: MEM 188). Cells were not fixed.



1X10<sup>6</sup> human peripheral blood lymphocytes were surface stained with CoraLite® Plus 647-conjugated Anti-Human CD3 (CL647-65151, Clone:UCHT1) and 0.2 ug PE-Mouse IgG2a Isotype Control. Cells were not fixed.