

For Research Use Only

# FcZero-rAb® PE-CoraLite® Plus 594 Anti-Mouse Ly-6G Rabbit Recombinant Antibody

Catalog Number: PCL594-FcA98284



## Basic Information

**Catalog Number:**  
PCL594-FcA98284

**Concentration:**  
100ug, 200 ug/ml

**Source:**  
Rabbit

**Isotype:**  
IgG

**Immunogen Catalog Number:**  
EG2609

**GenBank Accession Number:**  
NM\_001310438.1

**GeneID (NCBI):**  
546644

**UNIPROT ID:**  
P35461

**Full Name:**  
lymphocyte antigen 6 complex, locus G

**Calculated MW:**  
14 kDa

**Purification Method:**  
Protein A purification

**CloneNo.:**  
242141B11

**Recommended Dilutions:**  
FC: 0.25 ug per 10<sup>6</sup> cells in a 100 µl suspension

**Excitation/Emission maxima wavelengths:**  
496 nm, 565 nm / 604 nm

## Applications

**Tested Applications:**  
FC

**Species Specificity:**  
mouse

**Positive Controls:**

FC : mouse bone marrow cells,

## Background Information

Ly-6G (lymphocyte antigen 6 complex, locus G), also known as Gr-1, is a 21-25 kDa, glycosylphosphatidylinositol-anchored protein expressed on myeloid lineage cells in mouse bone marrow (PMID: 8360469). The expression of Ly-6G increases on neutrophils as they differentiate from immature cells in the bone marrow to mature cells in the blood and spleen (PMID: 8890901).

## Storage

**Storage:**

Store at 2-8°C. Avoid exposure to light. Stable for one year after shipment.

**Storage Buffer:**

PBS with 0.09% sodium azide and 0.5% BSA, pH7.3

For technical support and original validation data for this product please contact:

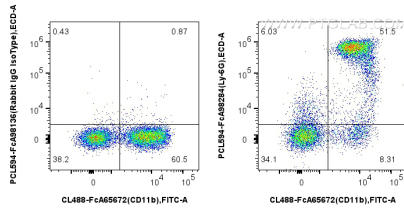
T: 4006900926

E: Proteintech-CN@ptglab.com

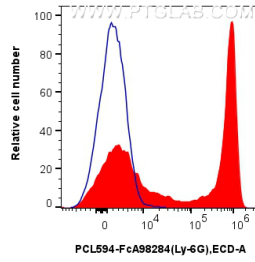
W: ptgcn.com

**This product is exclusively available under Proteintech Group brand and is not available to purchase from any other manufacturer.**

## Selected Validation Data



1x10<sup>6</sup> mouse bone marrow cells were surface stained with CoraLite® Plus 488 Anti-Mouse CD11b (M1/70), and 0.25 ug PE-CoraLite® Plus 594 Anti-Mouse Ly-6G Rabbit RecAb (PCL594-FcA98284, Clone: 242141B11) or 0.25 ug Rabbit IgG Isotype Control RecAb (PCL594-FcA98136, Clone: 240953C9). Cells were not fixed.



1x10<sup>6</sup> mouse bone marrow cells were surface stained with 0.25 ug PE-CoraLite® Plus 594 Anti-Mouse Ly-6G Rabbit RecAb (PCL594-FcA98284, Clone: 242141B11) (red) or 0.25 ug Rabbit IgG Isotype Control RecAb (PCL594-FcA98136, Clone: 240953C9) (blue). Cells were not fixed.