

For Research Use Only

# FcZero-rAb® PE-CoraLite® Plus 594 Anti-Human SLAM/CD150 Rabbit Recombinant Antibody

Catalog Number: PCL594-FcA98220



## Basic Information

Catalog Number:

PCL594-FcA98220

Concentration:

100tests, 5 ul/test

Source:

Rabbit

Isotype:

IgG

Immunogen Catalog Number:

EG1702

GenBank Accession Number:

NM\_003037.5

GeneID (NCBI):

6504

UNIPROT ID:

Q13291-1

Full Name:

signaling lymphocytic activation  
molecule family member 1

Calculated MW:

37kDa

Purification Method:

Protein A purification

CloneNo.:

241800B12

Recommended Dilutions:

FC: 5 ul per 10<sup>6</sup> cells in a 100 µl  
suspension

Excitation/Emission maxima  
wavelengths:

496 nm, 565 nm / 604 nm

## Applications

Tested Applications:

FC

Species Specificity:

human

Positive Controls:

FC : human PBMCs,

## Background Information

Signaling lymphocytic activation molecule (SLAM, also known as SLAMF1 or CD150) is a 70-95 kDa transmembrane glycoprotein that belongs to the immunoglobulin gene superfamily. SLAM is constitutively expressed on peripheral blood memory T-cells, T-cell clones, immature thymocytes and a proportion of B-cells, and is rapidly induced on naive T-cells after activation. SLAM is involved in T cell stimulation and cytokine production, and may play an important role in the regulation of immune responses to pathogens.

## Storage

Storage:

Store at 2-8°C. Avoid exposure to light. Stable for one year after shipment.

Storage Buffer:

PBS with 0.09% sodium azide and 0.5% BSA, pH7.3

For technical support and original validation data for this product please contact:

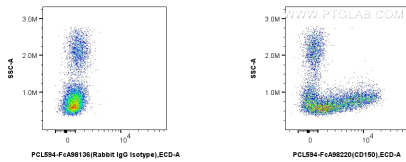
T: 4006900926

E: [Proteintech-CN@ptglab.com](mailto:Proteintech-CN@ptglab.com)

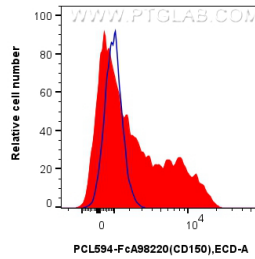
W: [ptgcn.com](http://ptgcn.com)

**This product is exclusively available under Proteintech Group brand and is not available to purchase from any other manufacturer.**

## Selected Validation Data



1x10<sup>6</sup> human PBMCs were surface stained with 5 ul PE-CorLite® Plus 594 Anti-Human SLAM/CD150 Rabbit RecAb (PCL594-FcA98220, Clone: 241800B12) or FcZero-rAb® PE-CorLite® Plus 594 Rabbit IgG Isotype Control Recombinant Antibody (PCL594-FcA98136, Clone: 240953C9). Cells were not fixed.



1x10<sup>6</sup> human PBMCs were surface stained with 5 ul PE-CorLite® Plus 594 Anti-Human SLAM/CD150 Rabbit RecAb (PCL594-FcA98220, Clone: 241800B12) (red) or FcZero-rAb® PE-CorLite® Plus 594 Rabbit IgG Isotype Control Recombinant Antibody (PCL594-FcA98136, Clone: 240953C9) (blue). Cells were not fixed.