

For Research Use Only

FcZero-rAb™ PE-CorLite® Plus 594 Rabbit IgG Isotype Control Recombinant Antibody

Catalog Number: PCL594-FcA98136



Basic Information

Catalog Number:

PCL594-FcA98136

Concentration:

100ug, 500 ug/ml

Source:

Rabbit

Isotype:

IgG

GenBank Accession Number:

GeneID (NCBI):

Full Name:

Purification Method:

Protein A purification

CloneNo.:

240953C9

Recommended Dilutions:

FC: 0.1 ug per 10⁶ cells in a 100 µl suspension

Excitation/Emission maxima wavelengths:

588nm/604nm

Applications

Tested Applications:

FC

Species Specificity:

n/a

Positive Controls:

FC : human PBMCs,

Background Information

This product is an isotype control antibody, which is used to estimate the non-specific binding of target primary antibodies due to Fc receptor binding or other protein-protein interactions. An isotype control antibody should have the same immunoglobulin type and be used at the same concentration as the test antibody.

Storage

Storage:

Store at 2-8°C. Avoid exposure to light. Stable for one year after shipment.

Storage Buffer:

PBS with 0.09% sodium azide, pH7.3

For technical support and original validation data for this product please contact:

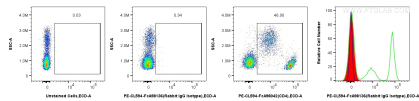
T: 4006900926

E: Proteintech-CN@ptglab.com

W: ptgcn.com

This product is exclusively available under Proteintech Group brand and is not available to purchase from any other manufacturer.

Selected Validation Data



1x10⁶ human PBMCs were unstained (left, blue in histogram), or surface stained with 0.1 ug FcZero-rAb™ PE-CorLite® Plus 594 Rabbit IgG Isotype Control Recombinant Antibody (PE-CL594-FcA98136, Clone: 240953C9) (mid, red in histogram) or FcZero-rAb™ PE-CorLite® Plus 594 Anti-Human CD4 Rabbit RecAb (PE-CL594-FcA98042, Clone: 240427E12) (right, green in histogram). Cells were not fixed.