

For Research Use Only

FcZero-rAb® PE-CoraLite® Plus 594 Anti-Human CSF2RA/CD116 Rabbit Recombinant Antibody

Catalog Number: PCL594-FcA98066



Basic Information

Catalog Number:
PCL594-FcA98066

Concentration:
100 tests, 5 ul/test

Source:
Rabbit

Isotype:
IgG

GenBank Accession Number:
BC002635

GeneID (NCBI):
1438

UNIPROT ID:
P15509

Full Name:
colony stimulating factor 2 receptor,
alpha, low-affinity (granulocyte-
macrophage)

Calculated MW:
46 kDa

Purification Method:
Protein A purification

CloneNo.:
241266B11

Recommended Dilutions:
FC: 5 ul per 10⁶ cells in a 100 µl
suspension

**Excitation/Emission maxima
wavelengths:**
496 nm, 565 nm / 604 nm

Applications

Tested Applications:
FC

Species Specificity:
human

Positive Controls:

FC : human PBMCs,

Background Information

CD116, also named as CSF2RA CDw116 CSF2RAX CSF2RAY CSF2RX CSF2RY GM-CSF-R-alpha GMCSFR and GMR, is a low affinity receptor for granulocyte-macrophage colony-stimulating factor. CD116 transduces a signal that results in the proliferation, differentiation, and functional activation of hematopoietic cells.

Storage

Storage:

Store at 2-8°C. Avoid exposure to light. Stable for one year after shipment.

Storage Buffer:

PBS with 0.09% sodium azide and 0.5% BSA, pH7.3

For technical support and original validation data for this product please contact:

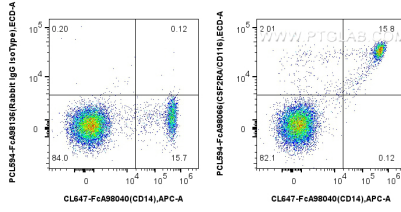
T: 4006900926

E: Proteintech-CN@ptglab.com

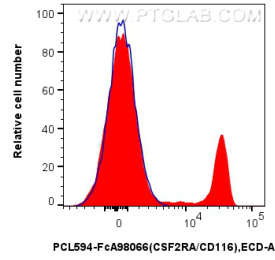
W: ptgcn.com

This product is exclusively available under Proteintech Group brand and is not available to purchase from any other manufacturer.

Selected Validation Data



1x10⁶ human PBMCs were surface stained with CoraLite® Plus 647 Anti-Human CD14, and 5 ul PE-CoraLite® Plus 594 Anti-Human CSF2RA/CD116 Rabbit RecAb (PCL594-FcA98066, Clone: 241266B11) or Rabbit IgG Isotype Control RecAb (PCL594-FcA98136, Clone: 240953C9). Cells were not fixed.



1x10⁶ human PBMCs were surface stained with 5 ul PE-CoraLite® Plus 594 Anti-Human CSF2RA/CD116 Rabbit RecAb (PCL594-FcA98066, Clone: 241266B11) (red) or Rabbit IgG Isotype Control RecAb (PCL594-FcA98136, Clone: 240953C9) (blue). Cells were not fixed.