

For Research Use Only

# FcZero-rAb® PE-CoraLite® Plus 594 Anti-Mouse CD3e (145-2C11) Rabbit Recombinant Antibody

Catalog Number: PCL594-FcA65651



## Basic Information

**Catalog Number:**  
PCL594-FcA65651

**Concentration:**  
100ug, 200 ug/ml

**Source:**  
Rabbit

**Isotype:**  
IgG

**GenBank Accession Number:**  
BC098236

**GeneID (NCBI):**  
12501

**UNIPROT ID:**  
P22646

**Full Name:**  
CD3 antigen, epsilon polypeptide

**Purification Method:**  
Protein A purification

**CloneNo.:**  
145-2C11

**Recommended Dilutions:**  
FC: 0.25 ug per 10<sup>6</sup> cells in a 100 µl suspension

**Excitation/Emission maxima wavelengths:**  
496 nm, 565 nm / 604 nm

## Applications

**Tested Applications:**  
FC

**Species Specificity:**  
mouse

**Positive Controls:**

FC : mouse splenocytes,

## Background Information

CD3 is a multimeric protein associated with the T-cell receptor (TCR) to form a complex involved in antigen recognition and signal transduction (PMID: 15885124). CD3 is composed of CD3  $\gamma$ ,  $\delta$ ,  $\epsilon$ , and  $\zeta$  chains (PMID: 1826255). It is expressed by thymocytes in a developmentally regulated manner, T cells, and some NK cells (PMID: 3289580). The TCR recognizes antigens bound to major histocompatibility complex (MHC) molecules. TCR-mediated peptide-MHC recognition is transmitted to the CD3 complex, leading to the intracellular signal transduction (PMID: 11985657).

## Storage

**Storage:**

Store at 2-8°C. Avoid exposure to light. Stable for one year after shipment.

**Storage Buffer:**

PBS with 0.09% sodium azide and 0.5% BSA, pH7.3

For technical support and original validation data for this product please contact:

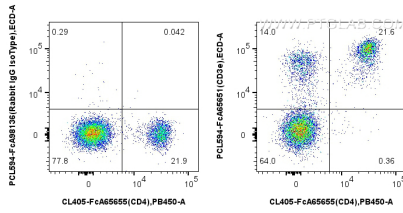
T: 4006900926

E: [Proteintech-CN@ptglab.com](mailto:Proteintech-CN@ptglab.com)

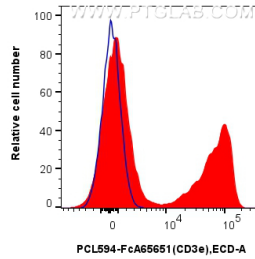
W: [ptgcn.com](http://ptgcn.com)

**This product is exclusively available under Proteintech Group brand and is not available to purchase from any other manufacturer.**

## Selected Validation Data



$1 \times 10^6$  mouse splenocytes were surface stained with CoraLite® Plus 405 Anti-Mouse CD4 (RM4-4), and 0.25 ug PE-CoraLite® Plus 594 Anti-Mouse CD3e (145-2C11) Rabbit RecAb (PCL594-FcA65651, Clone: 145-2C11) or 0.25 ug Rabbit IgG Isotype Control RecAb (PCL594-FcA98136, Clone: 240953C9). Cells were not fixed.



$1 \times 10^6$  mouse splenocytes were surface stained with 0.25 ug PE-CoraLite® Plus 594 Anti-Mouse CD3e (145-2C11) Rabbit RecAb (PCL594-FcA65651, Clone: 145-2C11) (red) or 0.25 ug Rabbit IgG Isotype Control RecAb (PCL594-FcA98136, Clone: 240953C9) (blue). Cells were not fixed.