

# BACH1 Hybrid Matched Antibody Pair, PBS Only

Catalog Number: MP80007-1

## Capture Antibody Information

**Catalog Number:**  
66762-2-PBS

**Host:**  
Mouse

**Isotype:**  
IgG1

**Purification Method:**  
Protein G purification

**Clone ID:**  
4E4A5

**Reactivity:**  
human

**GenBank:**  
BC063307

**Immunogen Catalog Number:**  
Ag6011

**Conjugate:**  
Unconjugated

**Full name:**  
BTB and CNC homology 1, basic leucine zipper transcription factor 1

**Gene ID:**  
571

## Detection Antibody Information

**Catalog Number:**  
82842-2-PBS

**Host:**  
Rabbit

**Isotype:**  
IgG

**Purification Method:**  
Protein A purification

**Clone ID:**  
402

**Reactivity:**  
human

**GenBank:**  
BC063307

**Immunogen Catalog Number:**  
Ag5128

**Conjugate:**  
Unconjugated

**Full name:**  
BTB and CNC homology 1, basic leucine zipper transcription factor 1

**Gene ID:**  
571

## Applications

**Tested Applications:**  
Cytometric bead array, Sandwich ELISA

**Range:**  
0.156-20 ng/mL (Cytometric Bead Array)  
31.25-2000 pg/mL (Sandwich ELISA)

**Recommended Dilutions:**  
It is recommended that this reagent should be titrated in each testing system to obtain optimal results.

## Product Information

MP80007-1 targets BACH1 in immunoassays as a matched antibody pair. Validated in Cytometric bead array, Sandwich ELISA.

Capture antibody: BACH1 Monoclonal antibody, PBS Only (Capture/Detector) 66762-2-PBS (4E4A5). 100 µg. Concentration 1 mg/mL.

Detection antibody: BACH1 Recombinant antibody, PBS Only (Detector) 82842-2-PBS (402). 100 µg. Concentration 1 mg/mL.

Alternative BACH1 matched antibody pairs: MP50384-1, MP50384-2, MP80007-2, MP80007-3

Unconjugated rabbit recombinant antibody and mouse monoclonal antibody pair in PBS only storage buffer at a concentration of 1 mg/mL, ready for conjugation. Created using Proteintech's proprietary in-house recombinant technology. Mouse monoclonal antibody and Rabbit Recombinant production enables unrivalled batch-to-batch consistency, easy scale-up, and future security of supply.

Matched antibody pairs are designed for use in a variety of assays and platforms that require matched antibody pairs.

Antibody use should be optimized for each application and assay.

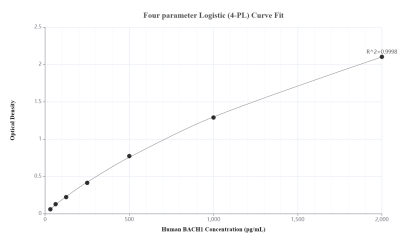
## Storage

**Storage:**  
Store at -80°C.

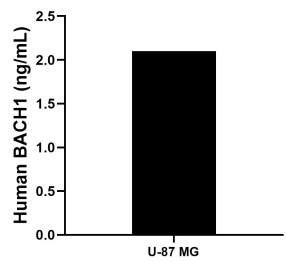
**The product is shipped with ice packs. Upon receipt, store it immediately at -80°C**

**Storage buffer:**  
PBS only

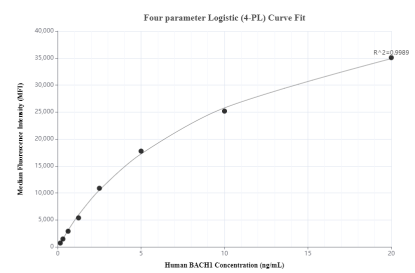
## Selected Validation Data



Sandwich ELISA standard curve of MP80007-1, Human BACH1 Hybrid Matched Antibody Pair - PBS only. 66762-2-PBS was coated to a plate as the capture antibody and incubated with serial dilutions of standard Ag6011. 82842-2-PBS was HRP conjugated as the detection antibody. Range: 31.25-2000 pg/mL



The mean BACH1 concentration was determined to be 2.1 ng/mL in U-87 MG cell extract based on a 2.0 mg/mL extract load.



Cytometric bead array standard curve of MP80007-1, BACH1 Hybrid Matched Antibody Pair, PBS Only. Capture antibody: 66762-2-PBS. Detection antibody: 82842-2-PBS. Standard: Ag6011. Range: 0.156-20 ng/mL