

# NSFL1C Monoclonal Matched Antibody Pair, PBS Only

Catalog Number:MP51764-1

## Capture Antibody Information

<b>Catalog Number:</b> 68182-1-PBS	<b>Clone ID:</b> 1F12E12	<b>Conjugate:</b> Unconjugated
<b>Host:</b> Mouse	<b>Reactivity:</b> human, mouse, rat, pig	<b>Full name:</b> NSFL1 (p97) cofactor (p47)
<b>Isotype:</b> IgG1	<b>GenBank:</b> BC002801	<b>Gene ID:</b> 55968
<b>Purification Method:</b> Protein G purification	<b>Immunogen Catalog Number:</b> Ag8040	

## Detection Antibody Information

<b>Catalog Number:</b> 68182-2-PBS	<b>Clone ID:</b> 1A7B11	<b>Conjugate:</b> Unconjugated
<b>Host:</b> Mouse	<b>Reactivity:</b> human	<b>Full name:</b> NSFL1 (p97) cofactor (p47)
<b>Isotype:</b> IgG1	<b>GenBank:</b> BC002801	<b>Gene ID:</b> 55968
<b>Purification Method:</b> Protein G purification	<b>Immunogen Catalog Number:</b> Ag8040	

## Applications

<b>Tested Applications:</b> Cytometric bead array	<b>Range:</b> 0.781-100 ng/mL (Cytometric Bead Array)	<b>Recommended Dilutions:</b> It is recommended that this reagent should be titrated in each testing system to obtain optimal results.
------------------------------------------------------	----------------------------------------------------------	-------------------------------------------------------------------------------------------------------------------------------------------

## Product Information

MP51764-1 targets NSFL1C in immunoassays as a matched antibody pair. Validated in Cytometric bead array.

Capture antibody: NSFL1C Monoclonal antibody, PBS Only (Capture) 68182-1-PBS (1F12E12). 100 µg. Concentration 1 mg/mL.

Detection antibody: NSFL1C Monoclonal antibody, PBS Only (Detector) 68182-2-PBS (1A7B11). 100 µg. Concentration 1 mg/mL.

Unconjugated mouse monoclonal antibody pair in PBS only storage buffer at a concentration of 1 mg/mL, ready for conjugation.

Matched antibody pairs are designed for use in a variety of assays and platforms that require matched antibody pairs.

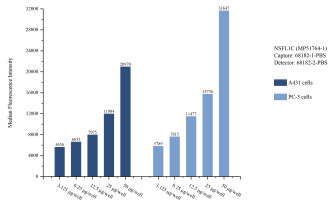
Antibody use should be optimized for each application and assay.

## Storage

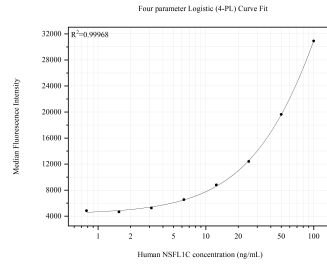
**Storage:**  
Store at -80°C.  
**The product is shipped with ice packs. Upon receipt, store it immediately at -80°C**

**Storage buffer:**  
PBS only

## Selected Validation Data



Cytometric bead array sample test of MP51764-1, NSFL1C Monoclonal Matched Antibody Pair, PBS Only. Capture antibody: 68182-1-PBS. Detection antibody: 68182-2-PBS.



Cytometric bead array standard curve of MP51764-1, NSFL1C Monoclonal Matched Antibody Pair, PBS Only. Capture antibody: 68182-1-PBS. Detection antibody: 68182-2-PBS. Standard: Ag8040. Range: 0.781-100 ng/mL