

For Research Use Only

MYBPC3 Monoclonal Matched Antibody Pair, PBS Only



Catalog Number:MP51741-1

Capture Antibody Information

Catalog Number:
67608-1-PBS

Host:
Mouse

Isotype:
IgG1

Purification Method:
Protein A purification

Clone ID:
3C8F8

Reactivity:
human, mouse, rat, pig, rabbit

GenBank:
BC151211

Immunogen Catalog Number:
Ag15848

Conjugate:
Unconjugated

Full name:
myosin binding protein C, cardiac

Gene ID:
4607

Detection Antibody Information

Catalog Number:
67608-2-PBS

Host:
Mouse

Isotype:
IgG1

Purification Method:
Protein G purification

Clone ID:
2G3H4

Reactivity:
human

GenBank:
BC151211

Immunogen Catalog Number:
Ag15848

Conjugate:
Unconjugated

Full name:
myosin binding protein C, cardiac

Gene ID:
4607

Applications

Tested Applications:
Cytometric bead array

Range:
1.563-200 ng/mL (Cytometric Bead Array)

Recommended Dilutions:
It is recommended that this reagent should be titrated in each testing system to obtain optimal results.

Product Information

MP51741-1 targets MYBPC3 in immunoassays as a matched antibody pair. Validated in Cytometric bead array.

Capture antibody: MYBPC3 Monoclonal antibody, PBS Only (Capture) 67608-1-PBS (3C8F8). 100 μ g. Concentration 1 mg/mL.

Detection antibody: MYBPC3 Monoclonal antibody, PBS Only (Detector) 67608-2-PBS (2G3H4). 100 μ g. Concentration 1 mg/mL.

Unconjugated mouse monoclonal antibody pair in PBS only storage buffer at a concentration of 1 mg/mL, ready for conjugation.

Matched antibody pairs are designed for use in a variety of assays and platforms that require matched antibody pairs.

Antibody use should be optimized for each application and assay.

Storage

Storage:

Store at -80°C.

The product is shipped with ice packs. Upon receipt, store it immediately at -80°C

Storage buffer:

PBS only

For technical support and original validation data for this product please contact:

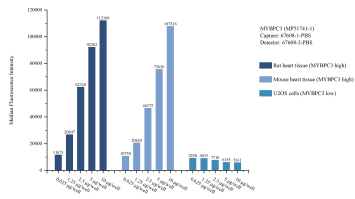
T: 4006900926

E: Proteintech-CN@ptglab.com

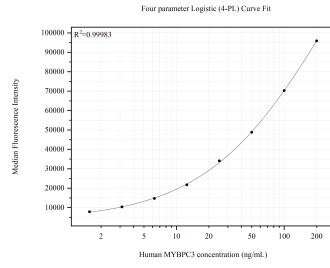
W: ptgcn.com

This product is exclusively available under Proteintech Group brand and is not available to purchase from any other manufacturer.

Selected Validation Data



Cytometric bead array sample test of MP51741-1, MYBPC3 Monoclonal Matched Antibody Pair, PBS Only. Capture antibody: 67608-1-PBS. Detection antibody: 67608-2-PBS.



Cytometric bead array standard curve of MP51741-1, MYBPC3 Monoclonal Matched Antibody Pair, PBS Only. Capture antibody: 67608-1-PBS. Detection antibody: 67608-2-PBS. Standard: Ag15848. Range: 1.563-200 ng/mL