

For Research Use Only

PHLPP2 Monoclonal Matched Antibody Pair, PBS Only



Catalog Number:MP51739-1

Capture Antibody Information

Catalog Number:
61111-1-PBS

Host:
Mouse

Isotype:
IgG1

Purification Method:
Protein G Magarose purification

Clone ID:
1C4H12

Reactivity:
human

GenBank:
BC129927

Immunogen Catalog Number:
Ag19000

Conjugate:
Unconjugated

Full name:
PH domain and leucine rich repeat protein phosphatase-Like

Gene ID:
23035

Detection Antibody Information

Catalog Number:
61111-2-PBS

Host:
Mouse

Isotype:
IgG1

Purification Method:
Protein G Magarose purification

Clone ID:
1G11A5

Reactivity:
human

GenBank:
BC129927

Immunogen Catalog Number:
Ag19000

Conjugate:
Unconjugated

Full name:
PH domain and leucine rich repeat protein phosphatase-Like

Gene ID:
23035

Applications

Tested Applications:
Cytometric bead array

Range:
0.156-20 ng/mL (Cytometric Bead Array)

Recommended Dilutions:
It is recommended that this reagent should be titrated in each testing system to obtain optimal results.

Product Information

MP51739-1 targets PHLPP2 in immunoassays as a matched antibody pair. Validated in Cytometric bead array.

Capture antibody: PHLPP2 Monoclonal antibody, PBS Only (Capture) 61111-1-PBS (1C4H12). 100 μ g. Concentration 1 mg/mL.

Detection antibody: PHLPP2 Monoclonal antibody, PBS Only (Detector) 61111-2-PBS (1G11A5). 100 μ g. Concentration 1 mg/mL.

Unconjugated mouse monoclonal antibody pair in PBS only storage buffer at a concentration of 1 mg/mL, ready for conjugation.

Matched antibody pairs are designed for use in a variety of assays and platforms that require matched antibody pairs.

Antibody use should be optimized for each application and assay.

Storage

Storage:

Store at -80°C.

The product is shipped with ice packs. Upon receipt, store it immediately at -80°C

Storage buffer:

PBS only

For technical support and original validation data for this product please contact:

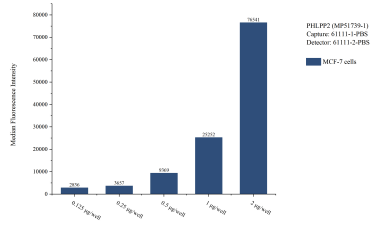
T: 4006900926

E: Proteintech-CN@ptglab.com

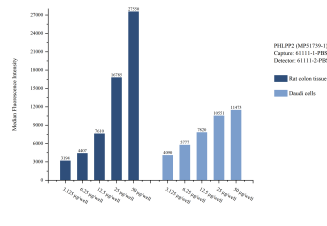
W: ptgcn.com

This product is exclusively available under Proteintech Group brand and is not available to purchase from any other manufacturer.

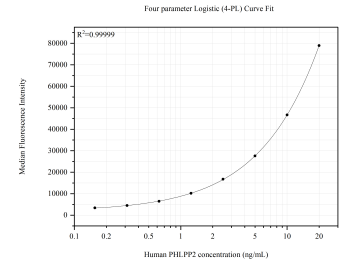
Selected Validation Data



Cytometric bead array sample test of MP51739-1, PHLPP2 Monoclonal Matched Antibody Pair, PBS Only. Capture antibody: 61111-1-PBS. Detection antibody: 61111-2-PBS.



Cytometric bead array sample test of MP51739-1, PHLPP2 Monoclonal Matched Antibody Pair, PBS Only. Capture antibody: 61111-1-PBS. Detection antibody: 61111-2-PBS.



Cytometric bead array standard curve of MP51739-1, PHLPP2 Monoclonal Matched Antibody Pair, PBS Only. Capture antibody: 61111-1-PBS. Detection antibody: 61111-2-PBS. Standard: Ag19000. Range: 0.156-20 ng/mL.