

MAP3K11 Monoclonal Matched Antibody Pair, PBS Only

Catalog Number:MP51737-1

Capture Antibody Information

Catalog Number:
61102-1-PBS
Host:
Mouse
Isotype:
IgG1
Purification Method:
Protein G Magarose purification

Clone ID:
1D4C8
Reactivity:
human
GenBank:
BC011263
Immunogen Catalog Number:
Ag29748

Conjugate:
Unconjugated
Full name:
mitogen-activated protein kinase kinase kinase 11
Gene ID:
4296

Detection Antibody Information

Catalog Number:
61102-2-PBS
Host:
Mouse
Isotype:
IgG1
Purification Method:
Protein G Magarose purification

Clone ID:
1G1C1
Reactivity:
human
GenBank:
BC011263
Immunogen Catalog Number:
Ag29748

Conjugate:
Unconjugated
Full name:
mitogen-activated protein kinase kinase kinase 11
Gene ID:
4296

Applications

Tested Applications:
Cytometric bead array

Range:
0.156-20 ng/mL (Cytometric Bead Array)

Recommended Dilutions:
It is recommended that this reagent should be titrated in each testing system to obtain optimal results.

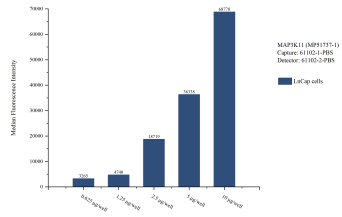
Product Information

MP51737-1 targets MAP3K11 in immunoassays as a matched antibody pair. Validated in Cytometric bead array.
Capture antibody: MAP3K11 Monoclonal antibody, PBS Only (Capture) 61102-1-PBS (1D4C8). 100 µg. Concentration 1 mg/mL.
Detection antibody: MAP3K11 Monoclonal antibody, PBS Only (Detector) 61102-2-PBS (1G1C1). 100 µg. Concentration 1 mg/mL.
Unconjugated mouse monoclonal antibody pair in PBS only storage buffer at a concentration of 1 mg/mL, ready for conjugation.
Matched antibody pairs are designed for use in a variety of assays and platforms that require matched antibody pairs.
Antibody use should be optimized for each application and assay.

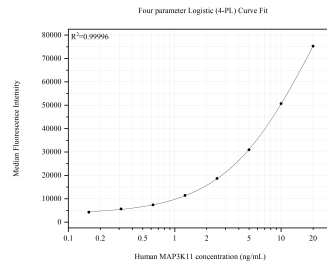
Storage

Storage:
Store at -80°C.
The product is shipped with ice packs. Upon receipt, store it immediately at -80°C
Storage buffer:
PBS only

Selected Validation Data



Cytometric bead array sample test of MP51737-1, MAP3K11 Monoclonal Matched Antibody Pair, PBS Only. Capture antibody: 61102-1-PBS. Detection antibody: 61102-2-PBS.



Cytometric bead array standard curve of MP51737-1, MAP3K11 Monoclonal Matched Antibody Pair, PBS Only. Capture antibody: 61102-1-PBS. Detection antibody: 61102-2-PBS. Standard: Ag29748. Range: 0.156-20 ng/mL