

For Research Use Only

CEP89, CCDC123 Monoclonal Matched Antibody Pair, PBS Only



Catalog Number:MP51731-1

Capture Antibody Information

Catalog Number:
68112-1-PBS
Host:
Mouse
Isotype:
IgG1
Purification Method:
Protein G purification

Clone ID:
1F12C5
Reactivity:
human, mouse
GenBank:
BC136328
Immunogen Catalog Number:
Ag28339

Conjugate:
Unconjugated
Full name:
coiled-coil domain containing 123
Gene ID:
84902

Detection Antibody Information

Catalog Number:
68112-2-PBS
Host:
Mouse
Isotype:
IgG1
Purification Method:
Protein G purification

Clone ID:
1B5B4
Reactivity:
human
GenBank:
BC136328
Immunogen Catalog Number:
Ag28339

Conjugate:
Unconjugated
Full name:
coiled-coil domain containing 123
Gene ID:
84902

Applications

Tested Applications:
Cytometric bead array

Range:
3.125-400 ng/mL (Cytometric Bead Array)

Recommended Dilutions:
It is recommended that this reagent should be titrated in each testing system to obtain optimal results.

Product Information

MP51731-1 targets CEP89, CCDC123 in immunoassays as a matched antibody pair. Validated in Cytometric bead array.

Capture antibody: CEP89, CCDC123 Monoclonal antibody, PBS Only (Capture) 68112-1-PBS (1F12C5). 100 µg. Concentration 1 mg/mL.

Detection antibody: CCDC123 Monoclonal antibody, PBS Only (Detector) 68112-2-PBS (1B5B4). 100 µg. Concentration 1 mg/mL.

Unconjugated mouse monoclonal antibody pair in PBS only storage buffer at a concentration of 1 mg/mL, ready for conjugation.

Matched antibody pairs are designed for use in a variety of assays and platforms that require matched antibody pairs.

Antibody use should be optimized for each application and assay.

Storage

Storage:
Store at -80°C.
The product is shipped with ice packs. Upon receipt, store it immediately at -80°C
Storage buffer:
PBS only

For technical support and original validation data for this product please contact:

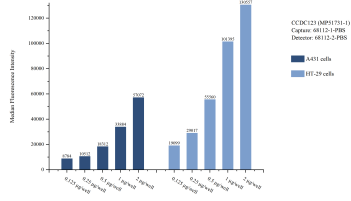
T: 4006900926

E: Proteintech-CN@ptglab.com

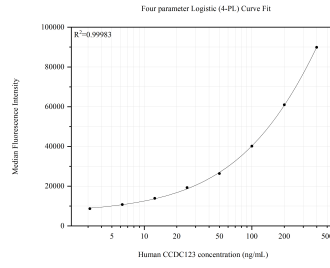
W: ptgcn.com

This product is exclusively available under Proteintech Group brand and is not available to purchase from any other manufacturer.

Selected Validation Data



Cytometric bead array sample test of MP51731-1, CEP89, CCDC123 Monoclonal Matched Antibody Pair, PBS Only. Capture antibody: 68112-1-PBS. Detection antibody: 68112-2-PBS.



Cytometric bead array standard curve of MP51731-1, CEP89, CCDC123 Monoclonal Matched Antibody Pair, PBS Only. Capture antibody: 68112-1-PBS. Detection antibody: 68112-2-PBS. Standard: Ag28339. Range: 3.125-400 ng/mL.