

ATF3 Monoclonal Matched Antibody Pair, PBS Only

Catalog Number:MP51683-1

Capture Antibody Information

Catalog Number:
61078-1-PBS
Host:
Mouse
Isotype:
IgG1
Purification Method:
Protein G purification

Clone ID:
1D10B6
Reactivity:
human
GenBank:
BC006322
Immunogen Catalog Number:
Ag27694

Conjugate:
Unconjugated
Full name:
activating transcription factor 3
Gene ID:
467

Detection Antibody Information

Catalog Number:
61078-2-PBS
Host:
Mouse
Isotype:
IgG1
Purification Method:
Protein G Magarose purification

Clone ID:
2G10A5
Reactivity:
human
GenBank:
BC006322
Immunogen Catalog Number:
Ag27694

Conjugate:
Unconjugated
Full name:
activating transcription factor 3
Gene ID:
467

Applications

Tested Applications:
Cytometric bead array

Range:
1.563-200 ng/mL (Cytometric Bead Array)

Recommended Dilutions:
It is recommended that this reagent should be titrated in each testing system to obtain optimal results.

Product Information

MP51683-1 targets ATF3 in immunoassays as a matched antibody pair. Validated in Cytometric bead array.

Capture antibody: ATF3 Monoclonal antibody, PBS Only (Capture) 61078-1-PBS (1D10B6). 100 µg. Concentration 1 mg/mL.

Detection antibody: ATF3 Monoclonal antibody, PBS Only (Detector) 61078-2-PBS (2G10A5). 100 µg. Concentration 1 mg/mL.

Unconjugated mouse monoclonal antibody pair in PBS only storage buffer at a concentration of 1 mg/mL, ready for conjugation.

Matched antibody pairs are designed for use in a variety of assays and platforms that require matched antibody pairs.

Antibody use should be optimized for each application and assay.

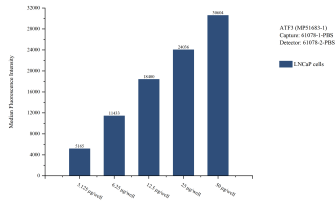
Storage

Storage:
Store at -80°C.

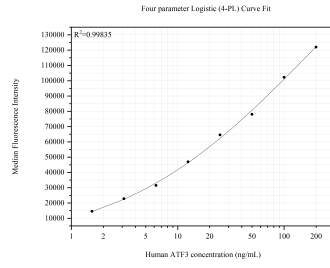
The product is shipped with ice packs. Upon receipt, store it immediately at -80°C

Storage buffer:
PBS only

Selected Validation Data



Cytometric bead array sample test of MP51683-1, ATF3 Monoclonal Matched Antibody Pair, PBS Only. Capture antibody: 61078-1-PBS. Detection antibody: 61078-2-PBS.



Cytometric bead array standard curve of MP51683-1, ATF3 Monoclonal Matched Antibody Pair, PBS Only. Capture antibody: 61078-1-PBS. Detection antibody: 61078-2-PBS. Standard: Ag27694. Range: 1.563-200 ng/mL.