

For Research Use Only

# PTP4A1 Monoclonal Matched Antibody Pair, PBS Only



Catalog Number:MP51678-1

## Capture Antibody Information

Catalog Number:  
67584-2-PBS

Host:  
Mouse

Isotype:  
IgG1

Purification Method:  
Protein G Magarose purification

Clone ID:  
2E12D5

Reactivity:  
human

GenBank:  
BC023975

Immunogen Catalog Number:  
Ag14436

Conjugate:  
Unconjugated

Full name:  
protein tyrosine phosphatase type  
IVA, member 1

Gene ID:  
7803

## Detection Antibody Information

Catalog Number:  
67584-3-PBS

Host:  
Mouse

Isotype:  
IgG1

Purification Method:  
Protein G Magarose purification

Clone ID:  
1E8G1

Reactivity:  
human

GenBank:  
BC023975

Immunogen Catalog Number:  
Ag14436

Conjugate:  
Unconjugated

Full name:  
protein tyrosine phosphatase type  
IVA, member 1

Gene ID:  
7803

## Applications

Tested Applications:  
Cytometric bead array

Range:  
0.781-100 ng/mL (Cytometric Bead  
Array)

Recommended Dilutions:  
It is recommended that this reagent  
should be titrated in each testing  
system to obtain optimal results.

## Product Information

MP51678-1 targets PTP4A1 in immunoassays as a matched antibody pair. Validated in Cytometric bead array.

Capture antibody: PTP4A1 Monoclonal antibody, PBS Only (Capture) 67584-2-PBS (2E12D5). 100  $\mu$ g. Concentration 1 mg/mL.

Detection antibody: PTP4A1 Monoclonal antibody, PBS Only (Detector) 67584-3-PBS (1E8G1). 100  $\mu$ g. Concentration 1 mg/mL.

Unconjugated mouse monoclonal antibody pair in PBS only storage buffer at a concentration of 1 mg/mL, ready for conjugation.

Matched antibody pairs are designed for use in a variety of assays and platforms that require matched antibody pairs.

Antibody use should be optimized for each application and assay.

## Storage

Storage:

Store at -80°C.

**The product is shipped with ice packs. Upon receipt, store it immediately at -80°C**

Storage buffer:

PBS only

For technical support and original validation data for this product please contact:

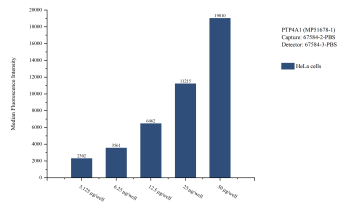
T: 4006900926

E: Proteintech-CN@ptglab.com

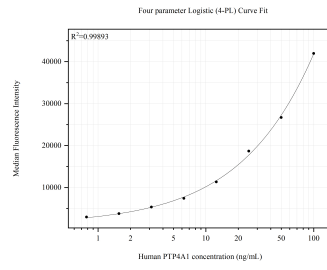
W: ptgcn.com

**This product is exclusively available under Proteintech Group brand and is not available to purchase from any other manufacturer.**

## Selected Validation Data



Cytometric bead array sample test of MP51678-1, PTP4A1 Monoclonal Matched Antibody Pair, PBS Only. Capture antibody: 67584-2-PBS. Detection antibody: 67584-3-PBS.



Cytometric bead array standard curve of MP51678-1, PTP4A1 Monoclonal Matched Antibody Pair, PBS Only. Capture antibody: 67584-2-PBS. Detection antibody: 67584-3-PBS. Standard: Ag14436. Range: 0.781-100 ng/mL.